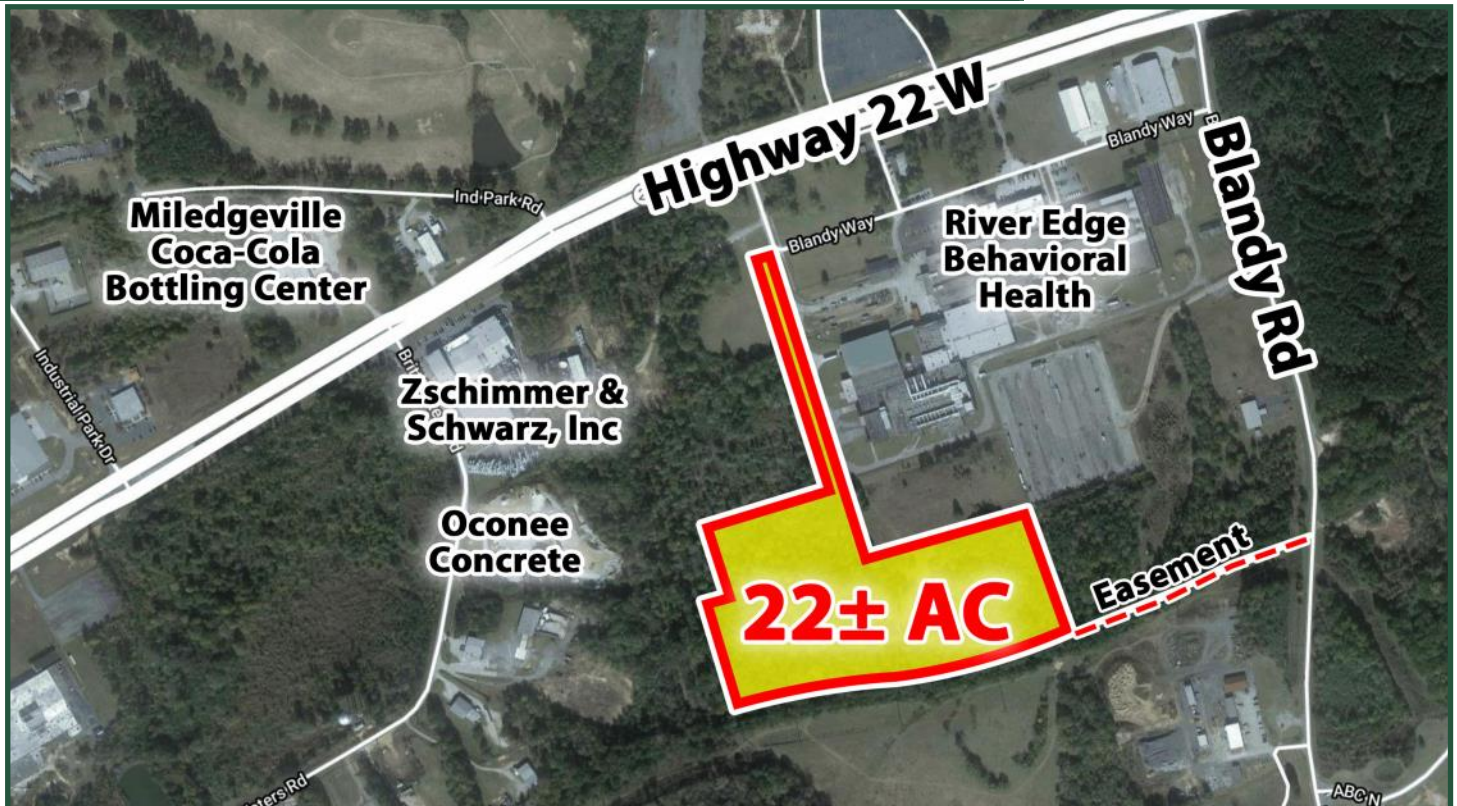


22± Acres Available
68 & 68A West Highway 22
Milledgeville, GA 31061



Lot Size: 22± Acres (2 parcels sold together)

Taxes: \$1,609.17 (2019)

Utilities: All Available

Zoning: Light Industrial

Access Easements: From Blandy Way or Blandy Road

Location: Conveniently located to Highway 22, Highway 441, The Navicent Oconee Hospital and downtown.

Nearby Businesses: Zschimmer & Schwarz, Inc., Former Forstmann Plant with multi tenants, Baldwin County Schools, Little Fishing Creek Golf Course, The Baldwin County Industrial Park, Central Georgia Technical College, Elite Gym, and Coco-Cola.

Note: Owner will consider dividing.

Reduced Price: \$25,000 Per Acre
~~**Sale Price: \$29,000 Per Acre**~~

**FOR MORE
INFORMATION
CONTACT**

Trip Wilhoit, CCIM, ALC
478-746-9421 (O)
478-960-4080 (C)
trip@fickling.com

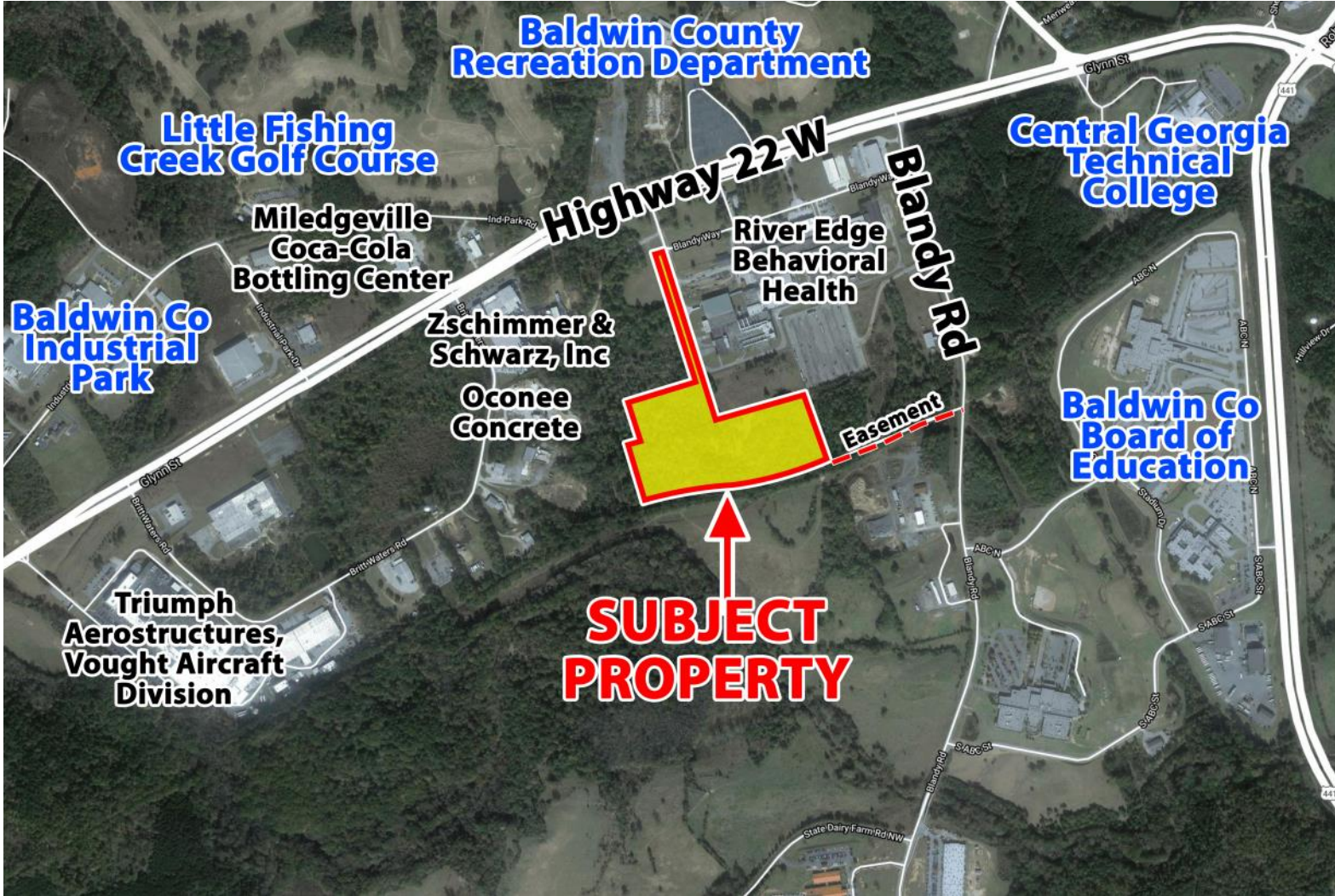
Patty Burns, CCIM, ALC
478-746-9421 (O)
478-951-5100 (C)
patty@fickling.com

commercial.fickling.com | georgiacommercialrealestate.net

577 Mulberry St, Suite 1100 * P.O. Box 310 * Macon, GA 31202 | Phone (478) 746-9421 | Fax (478) 742-2015

This information is from resources deemed to be reliable, no warranties or guarantees for accuracy are made by Fickling and Company

22± Acres Available
68 & 68A West Highway 22
Milledgeville, GA 31061



2020 DEMOS	3 Mile	5 Mile	10 Mile
Population	3,461	20,532	48,760
Median Age	37.8	33.2	37.1
Average HH Income	\$55,617	\$42,192	\$57,514

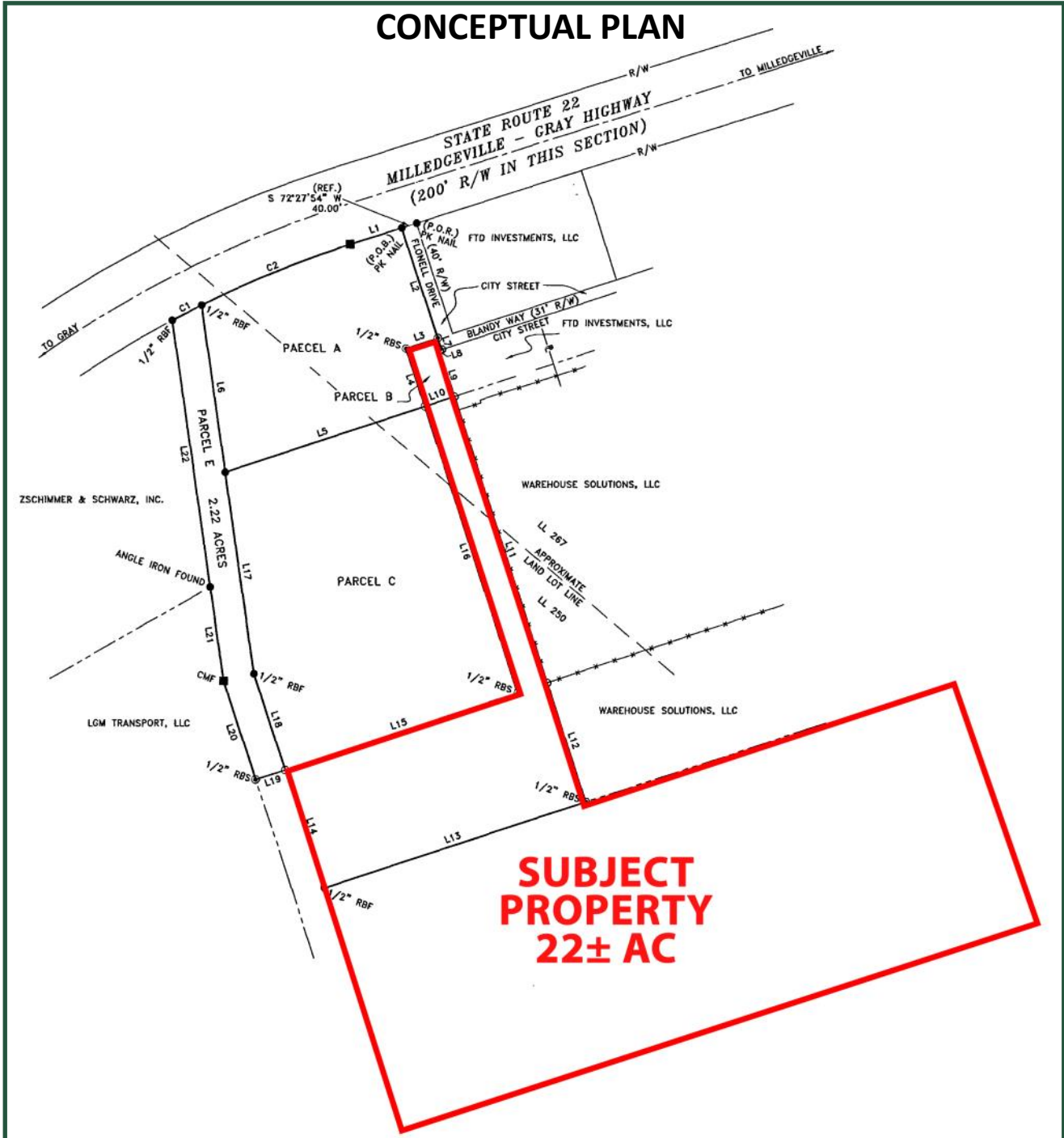
**FOR MORE
 INFORMATION
 CONTACT**

Trip Wilhoit, CCIM, ALC
 478-746-9421 (O)
 478-960-4080 (C)
trip@fickling.com

Patty Burns, CCIM, ALC
 478-746-9421 (O)
 478-951-5100 (C)
patty@fickling.com

commercial.fickling.com | georgiacommercialrealestate.net

22± Acres Available
68 & 68A West Highway 22
Milledgeville, GA 31061



FOR MORE
INFORMATION
CONTACT

Trip Wilhoit, CCIM, ALC
478-746-9421 (O)
478-960-4080 (C)
trip@fickling.com

Patty Burns, CCIM, ALC
478-746-9421 (O)
478-951-5100 (C)
patty@fickling.com

commercial.fickling.com | georgiacommercialrealestate.net

577 Mulberry St, Suite 1100 * P.O. Box 310 * Macon, GA 31202 | Phone (478) 746-9421 | Fax (478) 742-2015

This information is from resources deemed to be reliable, no warranties or guarantees for accuracy are made by Fickling and Company