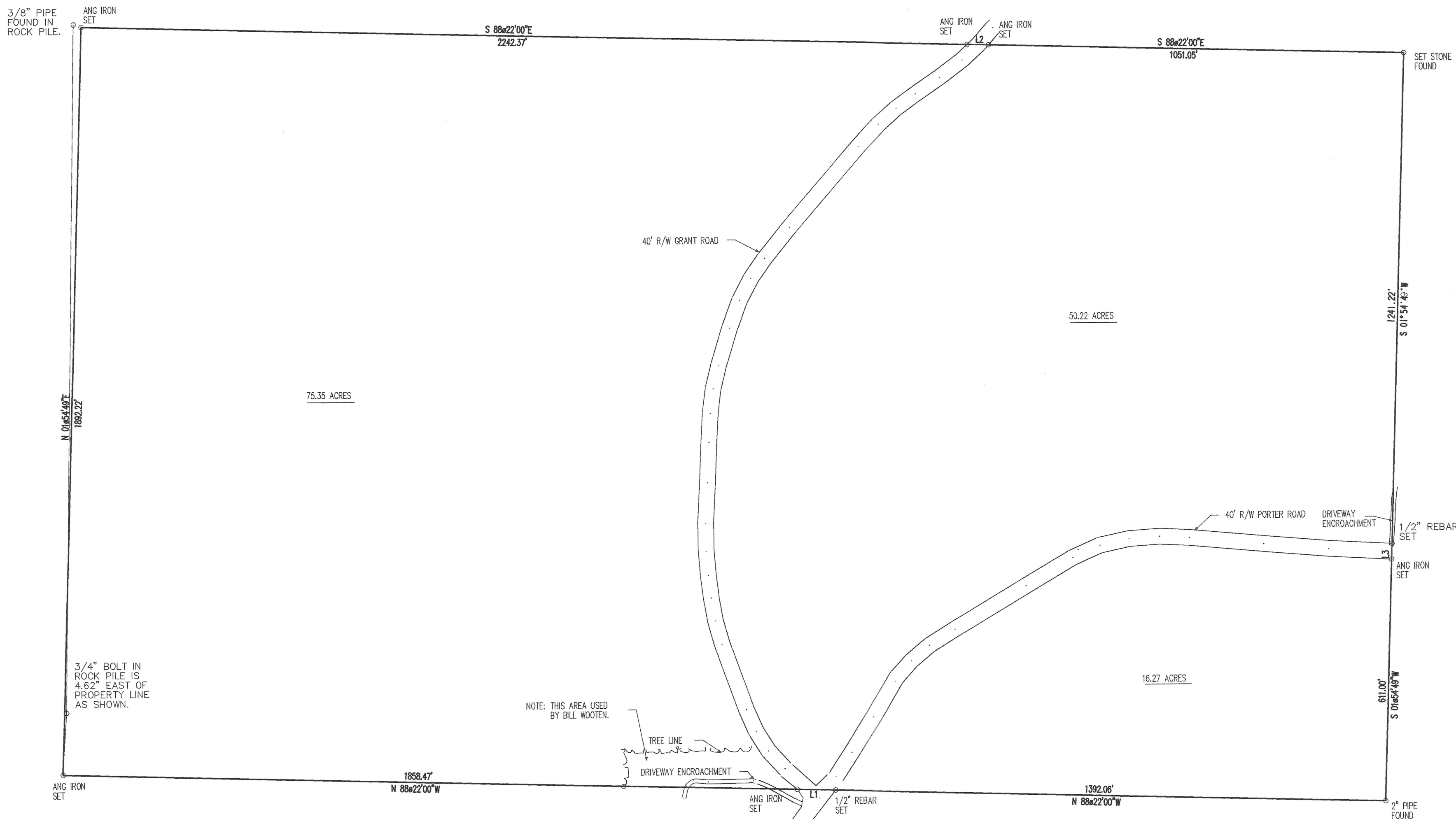


THE FIELD DATA UPON WHICH THIS PLAT IS BASED HAS A CLOSURE PRECISION OF ONE FOOT IN 22107 FEET AND AN ANGULAR ERROR OF 0.111MIN PER ANGLE POINT AND WAS ADJUSTED USING COMPASS RULE METHOD.
 THIS PLAT HAS BEEN CALCULATED FOR CLOSURE AND IS FOUND TO BE ACCURATE WITHIN ONE FOOT IN FLAT FEET.
 NIKON DTM-AZOLG USED DATE 6 JAN 1997

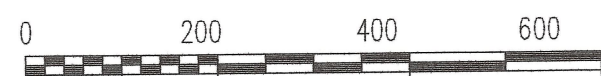
LINE	BEARING	DISTANCE
L 1	N 88°22'00"W	97.47'
L 2	S 88°22'00"E	54.58'
L 3	S 01°54'49"W	40.00'



SURVEY PLAT FOR FIRST TENNESSEE BANK, TRUSTEE UNDER WILL OF FELIX G. MILLER == TRUST "A" BEING ALL OF LAND LOT NO. 151, 19th DISTRICT, 4th SECTION, DADE COUNTY, GA.

DATE 14 JAN 1997

SCALE 1" = 200'



**Unsigned Copy
Not For Official Use**

CHARLES D. WARDLAW
 WALKER COUNTY SURVEYOR
 P.O. BOX 474
 LAFAYETTE, GA. 30728
 Ph: (706) 638-2964