

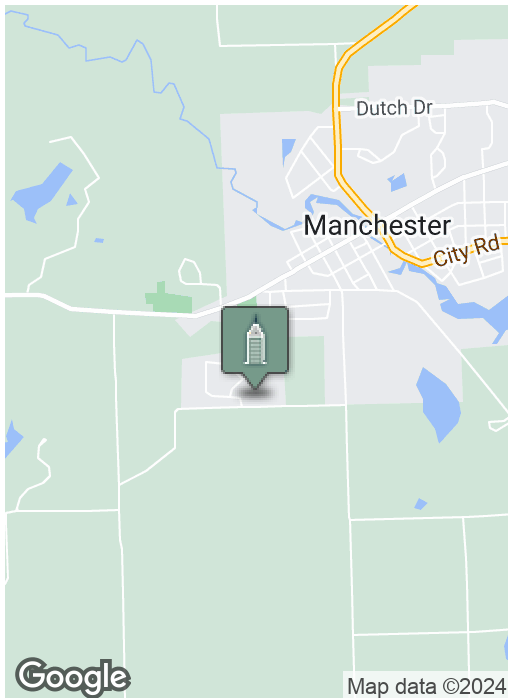
Residential Development Opportunity

SANDBORN, MANCHESTER, MI 48158



Swisher
COMMERCIAL

FOR SALE



SUMMARY

Sale Price:	\$400,000
Acreage:	14.67 Acres
Zoning:	PUD - 30 Lots
2023 Taxes:	\$2,600
Parcel ID:	PM-16-11-226-018

PROPERTY HIGHLIGHTS

- Emerald Glen Site Condominium in the Village of Manchester
- Frontage on Sandborn Road and Galloway Drive
- Municipal water, sewer, electric and natural gas available
- Paved roads
- 931' of frontage and 1,087' deep
- Full engineering and site plan completed
- Seller will consider owner financing to qualified buyer

**Building
relationships.**

208 East Washington Street Ann Arbor, MI 48104

734.663.0501

Charlie Koenn

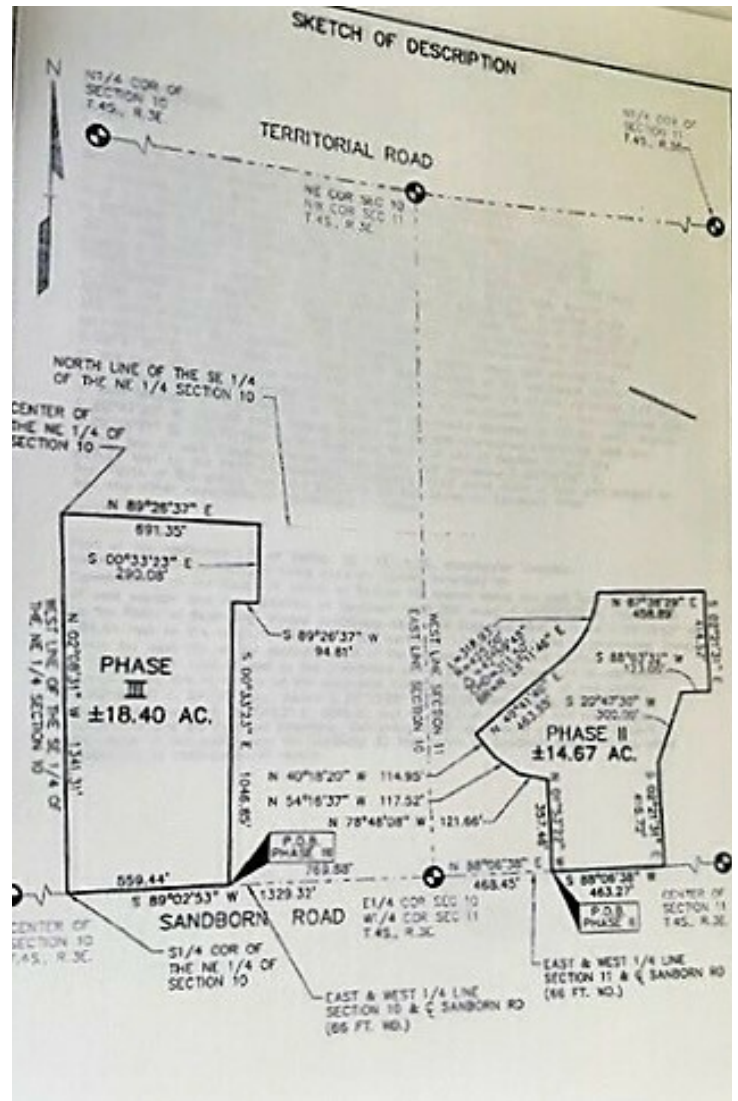
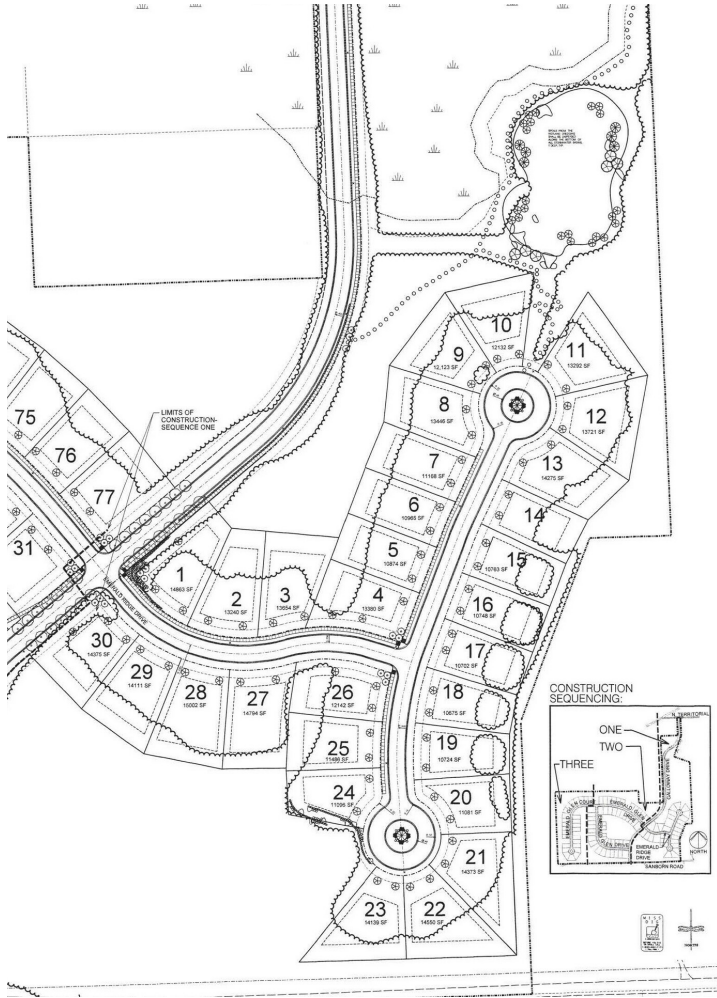
734.926.0230

CKOENN@SWISHERCOMMERCIAL.COM

SWISHERCOMMERCIAL.COM

Residential Development Opportunity

SANDBORN, MANCHESTER, MI 48158



Building relationships.

208 East Washington Street Ann Arbor, MI 48104

734.663.0501

Charlie Koenn

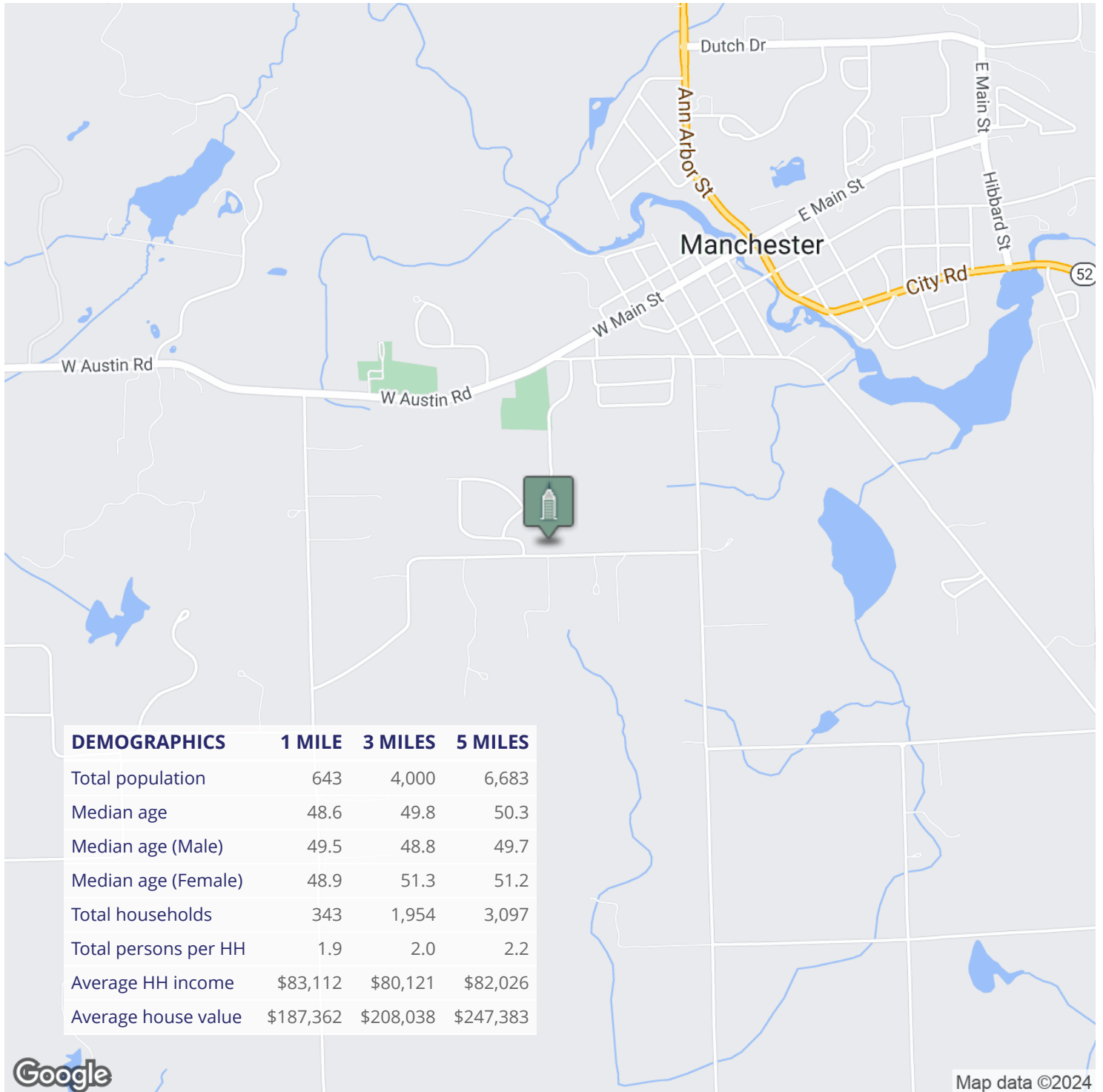
734.926.0230

CKOENN@SWISHERCOMMERCIAL.COM

SWISHERCOMMERCIAL.COM

Residential Development Opportunity

SANDBORN, MANCHESTER, MI 48158



Building relationships.

208 East Washington Street Ann Arbor, MI 48104

734.663.0501

Charlie Koenn

734.926.0230

CKOENN@SWISHERCOMMERCIAL.COM

SWISHERCOMMERCIAL.COM