

Auto Salvage Business & Real Estate

3127 S WAGNER ROAD, ANN ARBOR, MI 48103



Swisher
COMMERCIAL

FOR SALE



SUMMARY

Sale Price:	See Broker
Lot Size:	22.87 Acres
Building Size:	6,000 SF
Zoning:	AG (AGRICULTURAL DISTRICT) With Conditional Use Permit
2023 Taxes:	\$5,932.98
Parcel IDs:	M-13-12-200-006 M-13-12-200-015

PROPERTY HIGHLIGHTS

- Well established auto parts business.
- Family owned and operated since 1970
- Includes business, equipment, and real estate.
- Excellent location
- Situated on 20+ acres
- Yard has been leveled and compacted with asphalt millings
- 6,000 sf building includes office, lobby area, and shop which includes three (3) lifts
- DO NOT approach property. Call for private showing.
- Confidentiality Agreement required for additional information

***Building
relationships.***

208 East Washington Street Ann Arbor, MI 48104

734.663.0501

Charlie Koenn

734.926.0230

CKOENN@SWISHERCOMMERCIAL.COM

Randy Maas

734.222.7525

RMAAS@SWISHERCOMMERCIAL.COM

SWISHERCOMMERCIAL.COM

Auto Salvage Business & Real Estate for Sale

3127 S WAGNER ROAD, ANN ARBOR, MI 48103



Building relationships.

208 East Washington Street Ann Arbor, MI 48104

734.663.0501

Charlie Koenn

734.926.0230

CKOENN@SWISHERCOMMERCIAL.COM

Randy Maas

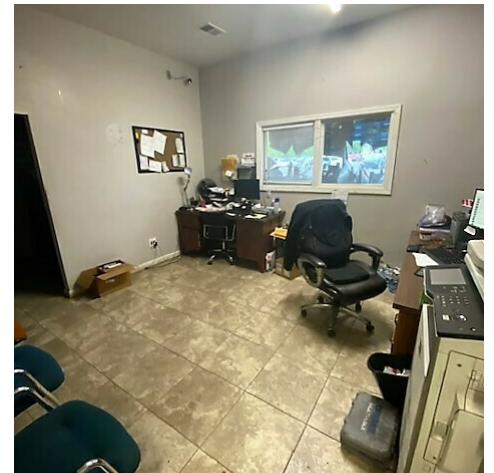
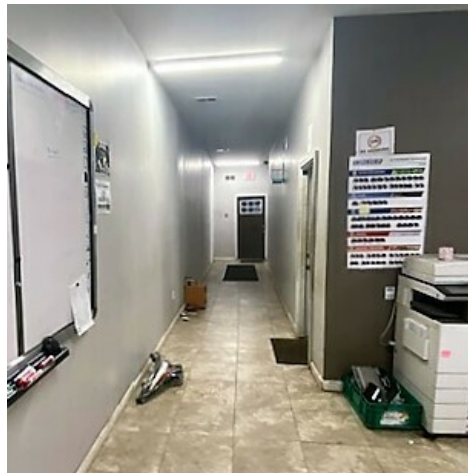
734.222.7525

RMAAS@SWISHERCOMMERCIAL.COM

SWISHERCOMMERCIAL.COM

Auto Salvage Business & Real Estate for Sale

3127 S WAGNER ROAD, ANN ARBOR, MI 48103



Building relationships.

208 East Washington Street Ann Arbor, MI 48104

734.663.0501

Charlie Koenn

734.926.0230

CKOENN@SWISHERCOMMERCIAL.COM

Randy Maas

734.222.7525

RMAAS@SWISHERCOMMERCIAL.COM

SWISHERCOMMERCIAL.COM

Auto Salvage Business & Real Estate for Sale

3127 S WAGNER ROAD, ANN ARBOR, MI 48103



Building relationships.

208 East Washington Street Ann Arbor, MI 48104

734.663.0501

Charlie Koenn

734.926.0230

CKOENN@SWISHERCOMMERCIAL.COM

Randy Maas

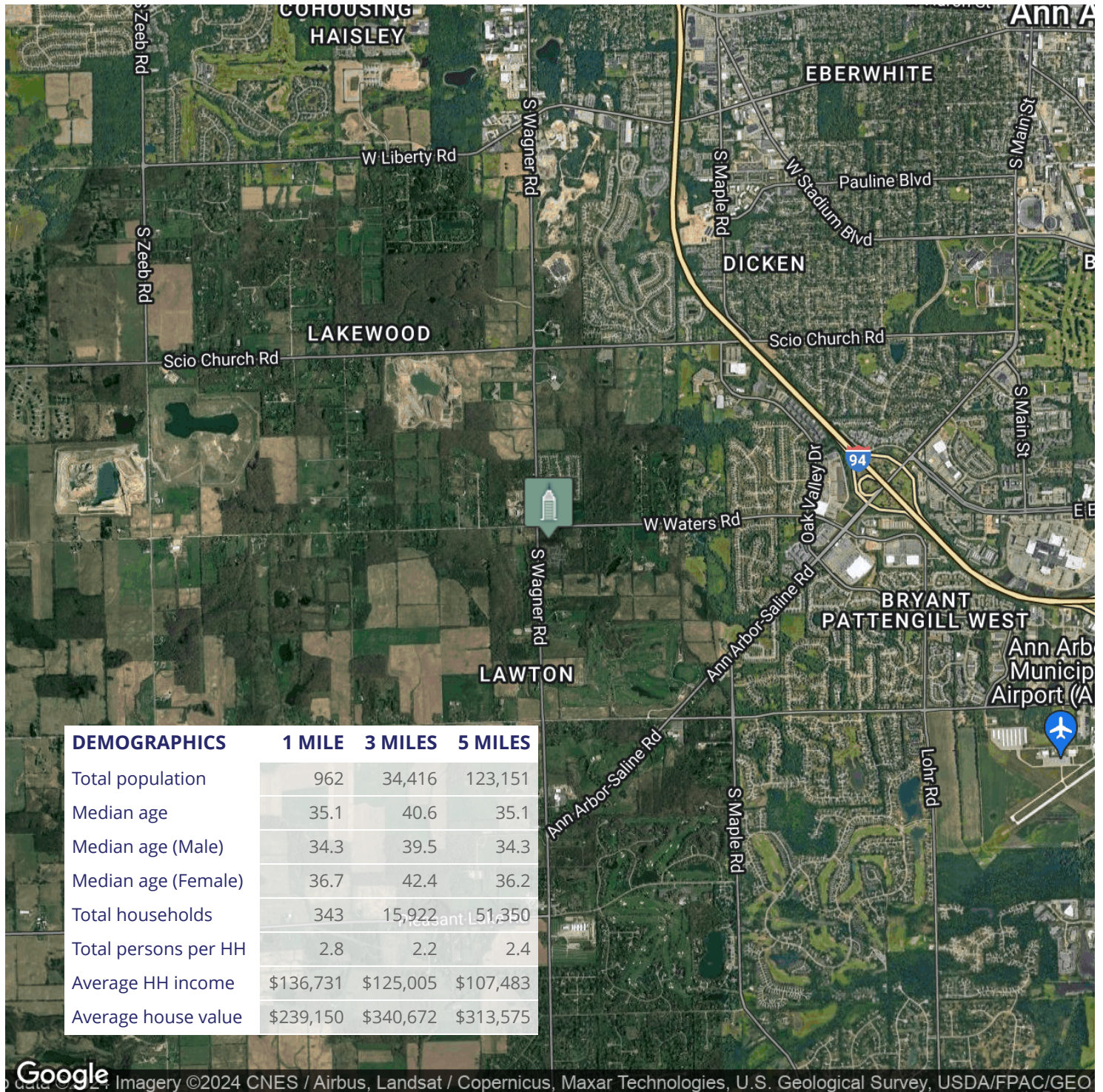
734.222.7525

RMAAS@SWISHERCOMMERCIAL.COM

SWISHERCOMMERCIAL.COM

Auto Salvage Business & Real Estate for Sale

3127 S WAGNER ROAD, ANN ARBOR, MI 48103



Google Imagery ©2024 CNES / Airbus, Landsat / Copernicus, Maxar Technologies, U.S. Geological Survey, USDA/FPAC/GEO

Building relationships.

208 East Washington Street Ann Arbor, MI 48104

734.663.0501

Charlie Koenn

734.926.0230

CKOENN@SWISHERCOMMERCIAL.COM

Randy Maas

734.222.7525

RMAAS@SWISHERCOMMERCIAL.COM

SWISHERCOMMERCIAL.COM