



**FOR SALE**

120 ACRES +/- OF CULTIVATED FARMLAND & TIMBER

SPRINGRIDGE ROAD, RAYMOND, MS 39154

**SALE PRICE: \$1,175,850.00**

Overby Land • 800 Woodlands Pkwy., Ste. 206 • Ridgeland, MS 39157 • 601.366.8511 • [Overby.net](http://Overby.net)



*For More Information:*

**Paul Gonwa, ALC** 601.214.7985 [paul@overby.net](mailto:paul@overby.net)

# 120 ACRES +/- OF CULTIVATED FARMLAND & TIMBER

SPRINGRIDGE ROAD, RAYMOND, MS 39154

## PROPERTY SUMMARY



## PROPERTY DESCRIPTION

Conveniently located between Clinton and Raymond, this prime development property is located just minutes from several major transportation corridors on paved Springridge Road. Quality properties such as this are hard to find. Currently in crop production, this level property can be easily converted into large residential estates or possibly even commercial. Owners may consider subdividing. Call today for a private tour of this beautiful property!

## DIRECTIONS:

From I-20 and Springridge Road in Clinton, go south on Springridge Road towards Raymond for 3.2 miles and the property will be on the left. From Hwy 18 and Springridge Road, go north on Springridge Road towards Clinton for 0.70 miles and the property will be on the right.

Springridge Road Frontage: 2,900' +/-

GPS Coordinates at double gate:  
32.2792, -90.3366

Overby Land • 800 Woodlands Pkwy., Ste. 206 • Ridgeland, MS 39157 • 601.366.8511 • Overby.net

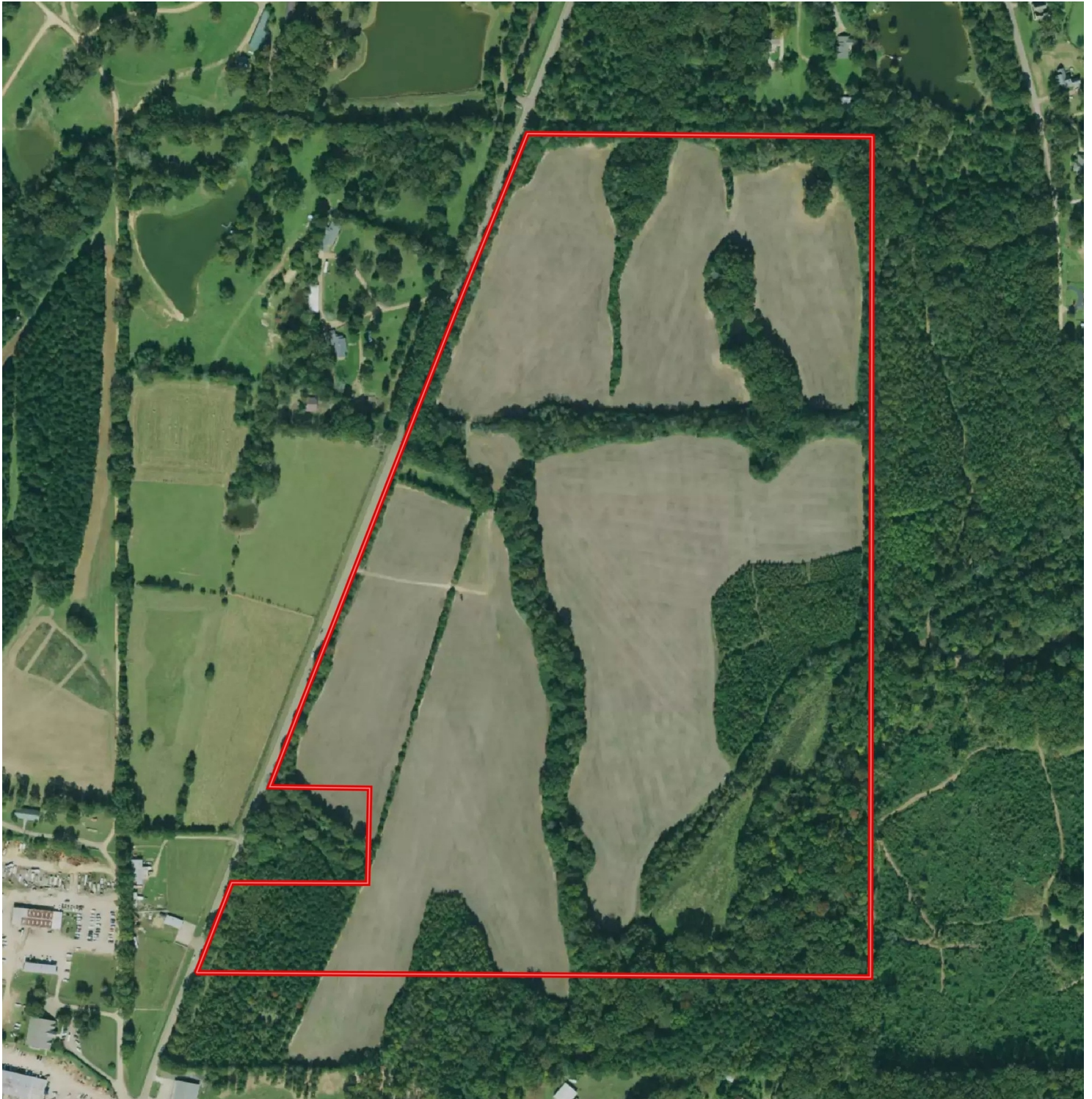


For More Information:

Paul Gonwa, ALC 601.214.7985 paul@overby.net

# 120 ACRES +/- OF CULTIVATED FARMLAND & TIMBER

SPRINGRIDGE ROAD, RAYMOND, MS 39154  
AERIAL PHOTOGRAPH



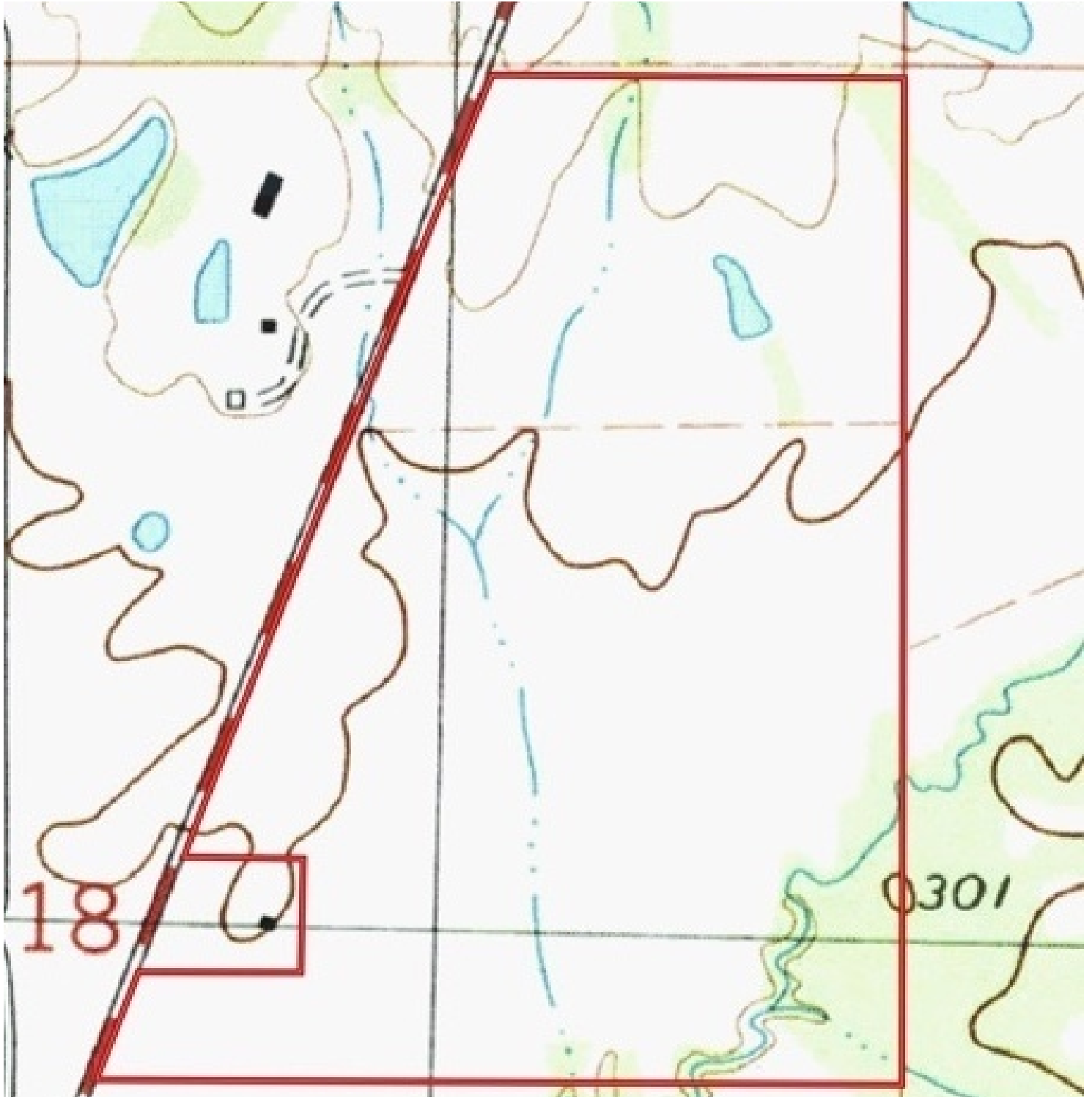
Overby Land • 800 Woodlands Pkwy., Ste. 206 • Ridgeland, MS 39157 • 601.366.8511 • Overby.net



*For More Information:*

**Paul Gonwa, ALC** 601.214.7985 paul@overby.net

**120 ACRES +/- OF CULTIVATED FARMLAND & TIMBER**  
SPRINGRIDGE ROAD, RAYMOND, MS 39154  
**TOPOGRAPHIC MAP**



Overby Land • 800 Woodlands Pkwy., Ste. 206 • Ridgeland, MS 39157 • 601.366.8511 • [Overby.net](http://Overby.net)



*For More Information:*

**Paul Gonwa, ALC** 601.214.7985 [paul@overby.net](mailto:paul@overby.net)

# 120 ACRES +/- OF CULTIVATED FARMLAND & TIMBER

SPRINGRIDGE ROAD, RAYMOND, MS 39154

ADDITIONAL PHOTOS



Overby Land • 800 Woodlands Pkwy., Ste. 206 • Ridgeland, MS 39157 • 601.366.8511 • Overby.net



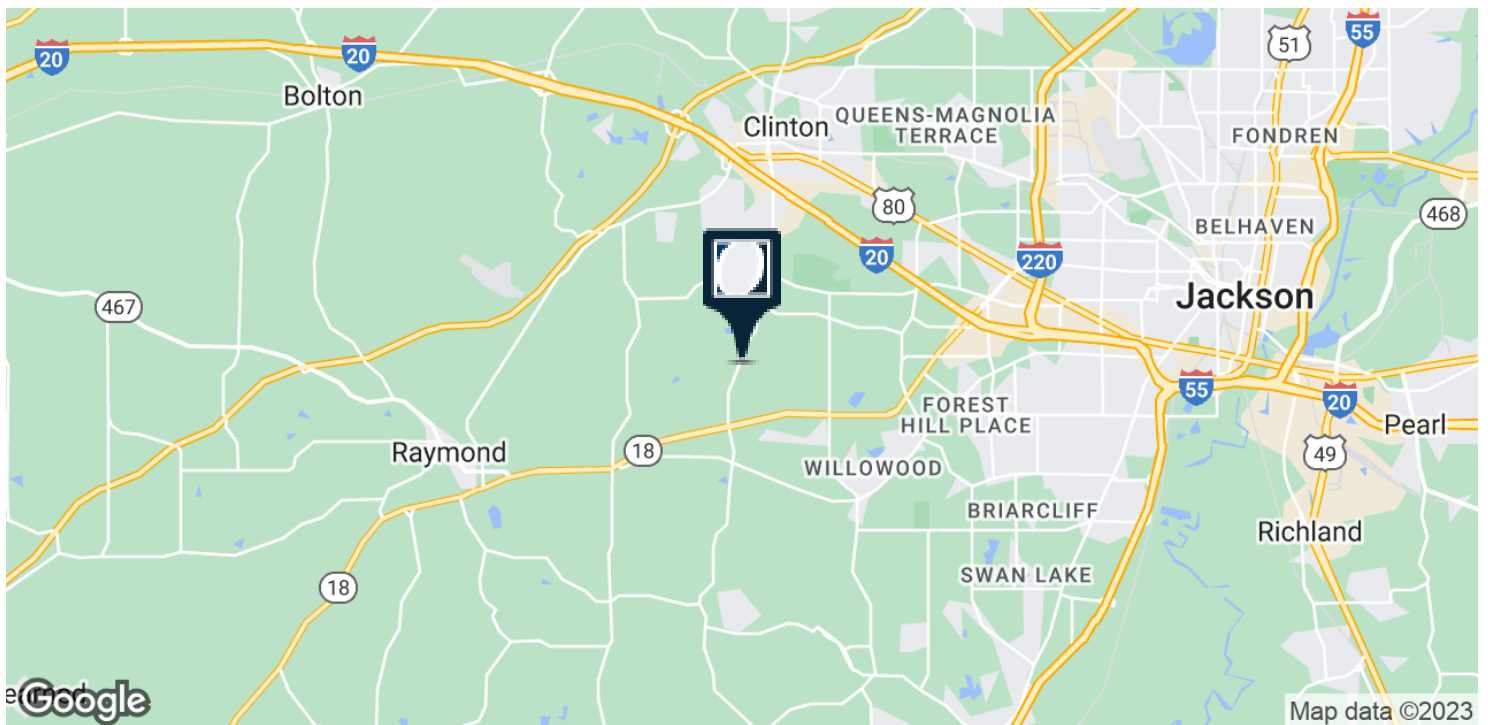
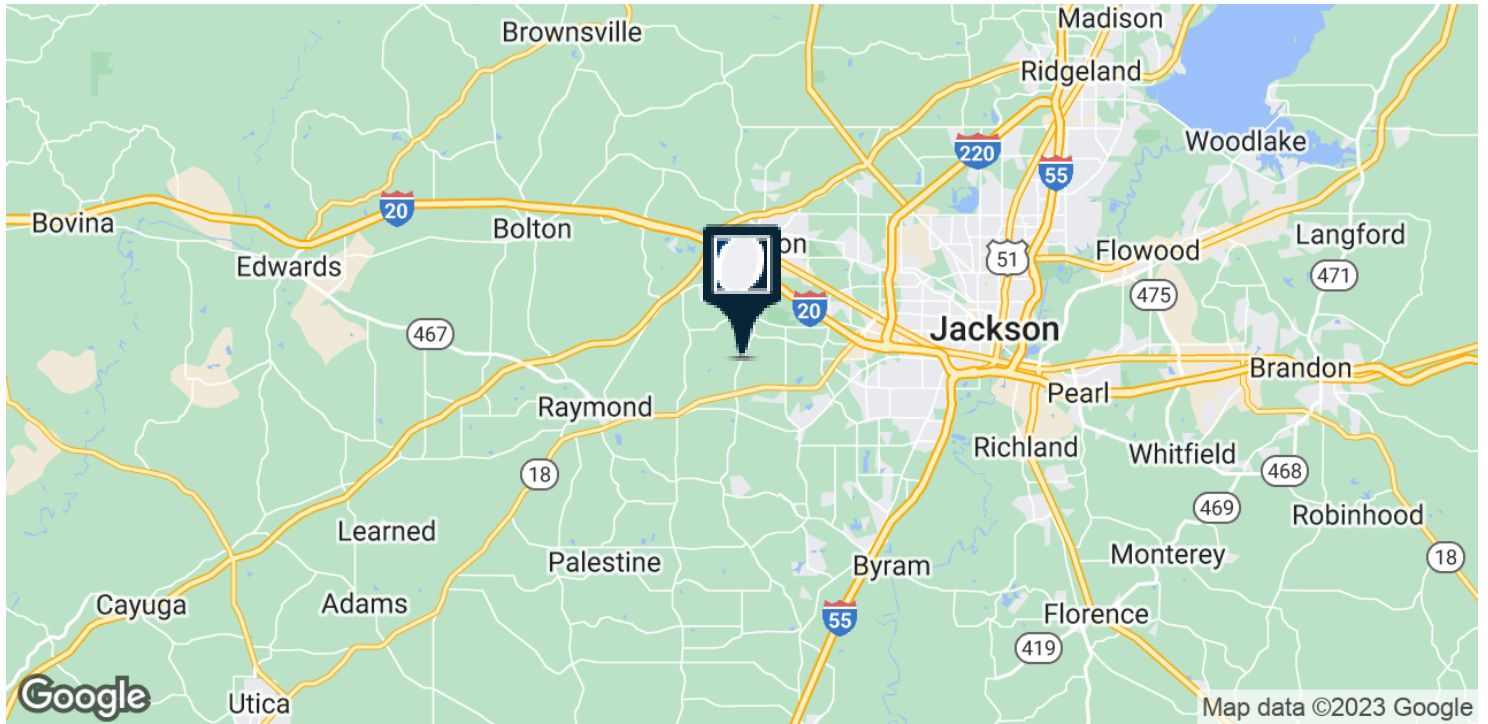
For More Information:

**Paul Gonwa, ALC** 601.214.7985 paul@overby.net

# 120 ACRES +/- OF CULTIVATED FARMLAND & TIMBER

SPRINGRIDGE ROAD, RAYMOND, MS 39154

## LOCATION MAP



Overby Land • 800 Woodlands Pkwy., Ste. 206 • Ridgeland, MS 39157 • 601.366.8511 • Overby.net



For More Information:

**Paul Gonwa, ALC** 601.214.7985 paul@overby.net