



# LAKE STREETY GROVE

LAKE STREETY GROVE  
FROSTPROOF, FL 33843

Daniel Lanier  
C: 863.698.2971  
daniel.lanier@svn.com

# Property Overview



**Sale Price**

**\$1,100,000**

## PROPERTY OVERVIEW

Lake Streety Grove is a 90.89 acre Valencia grove located just outside of Frostproof, Florida. The grove is irrigated by a 10" well powered by a Detroit diesel engine. The property has 1,028 feet of frontage on Otto Polk Road which is paved while there is 2,822 feet of frontage on Lake Streety Road, which is an unpaved road. With this amount of road frontage of this corner property, Lake Streety Grove could be easily converted into an amazing homesite or converted into many different types of crops.

## OFFERING SUMMARY

**Acreage:** **91 ± Acres**

Price / Acre: \$12,103

City: Frostproof

County: Polk

Property Type: Land: Agronomics, Citrus, Farms & Nurseries Properties, Land Investment, Land Other

# Specifications & Features



## SPECIFICATIONS & FEATURES

### Land Types:

- Agronomics
- Citrus
- Farms & Nurseries Properties
- Land Investment
- Land Other

### Uplands / Wetlands:

82.5 acres of uplands, 8.4 acres of wetlands

### Soil Types:

Sparr Sand  
Millhopper Fine Sand  
Smyrna and Myakka

### Taxes & Tax Year:

\$1,596.23 [2023]

### Road Frontage:

1,028 feet of frontage on Otto Polk Road  
and 2,822 feet of frontage on Lake  
Streety Road

### Current Use:

Operating Citrus Grove

### Wells Information:

One 10" well with a diesel power unit

### Irrigation:

Microjet irrigation with emitters at each tree

# Location



## LOCATION & DRIVING DIRECTIONS

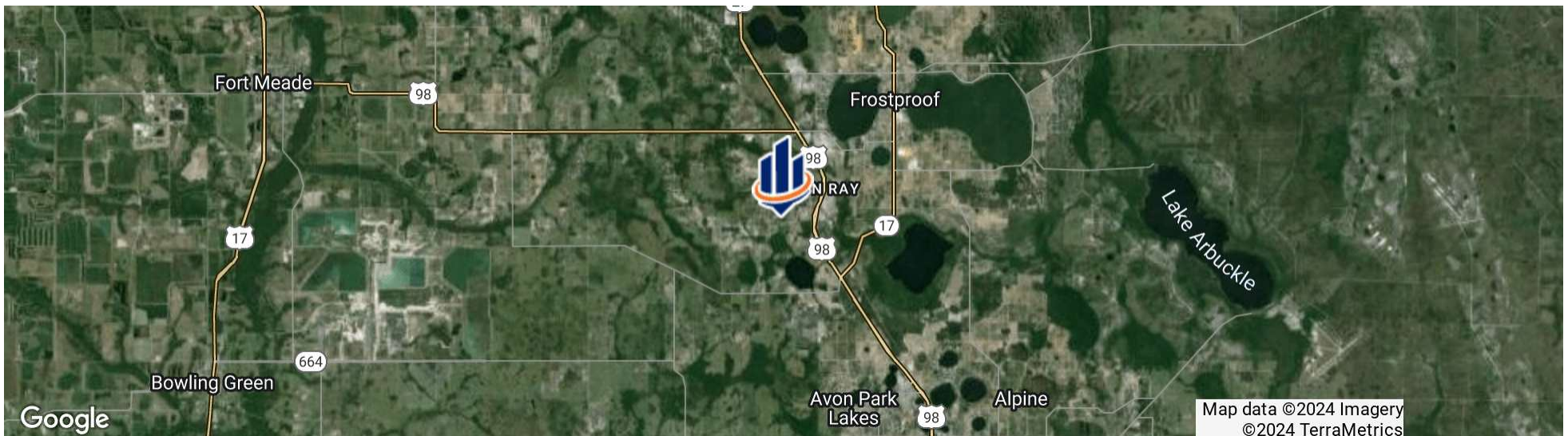
Parcel:

GPS: 27.6987768, -81.5780406

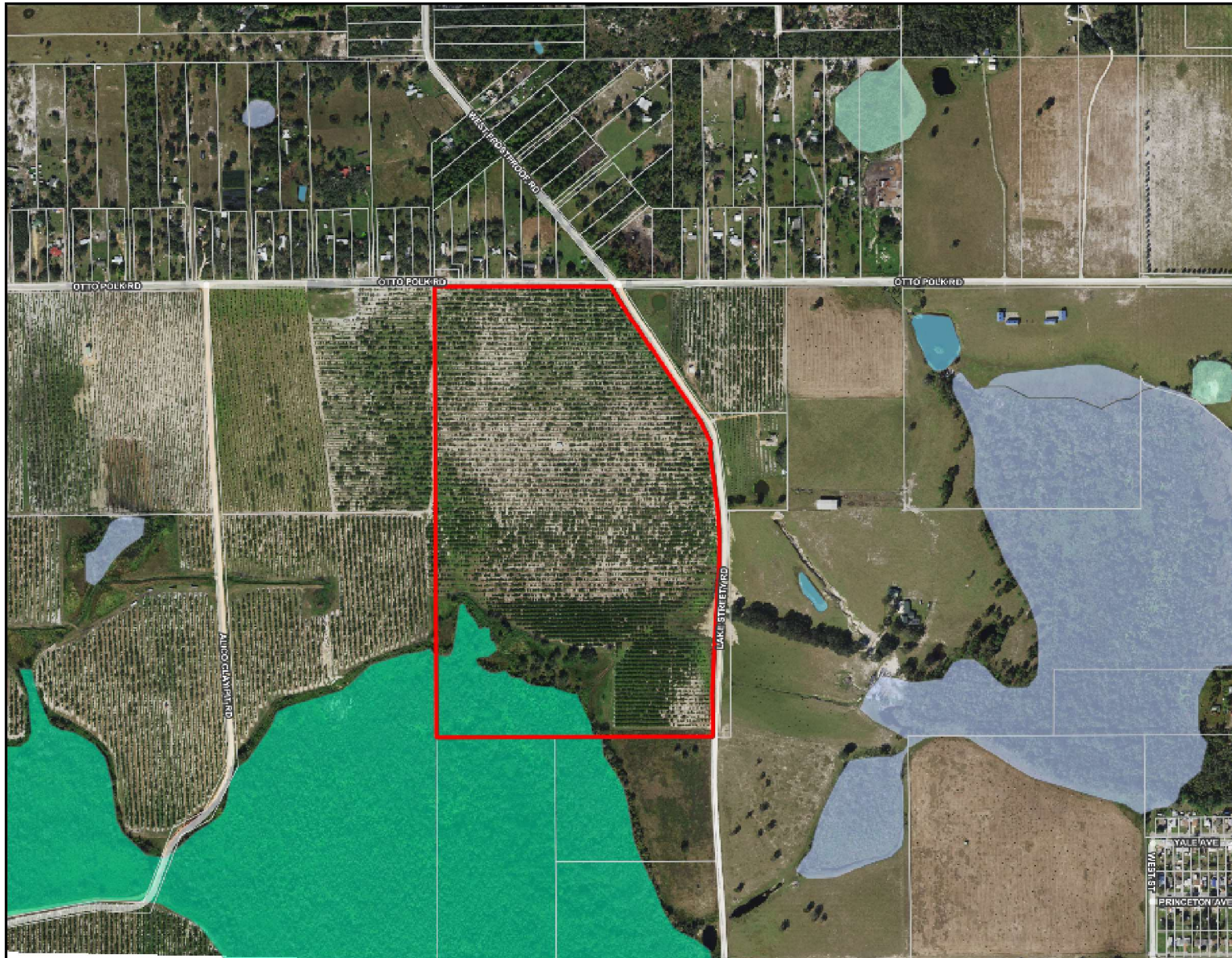
Driving Directions:

- From US 27/US 98 near Frostproof, travel South on US 27 for 2.5 mi to Otto Polk Road
- Turn West onto Otto Polk Road
- The property is on Otto Polk Road in 0.8 miles

Showing Instructions: Call Daniel Lanier

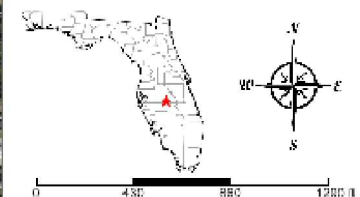




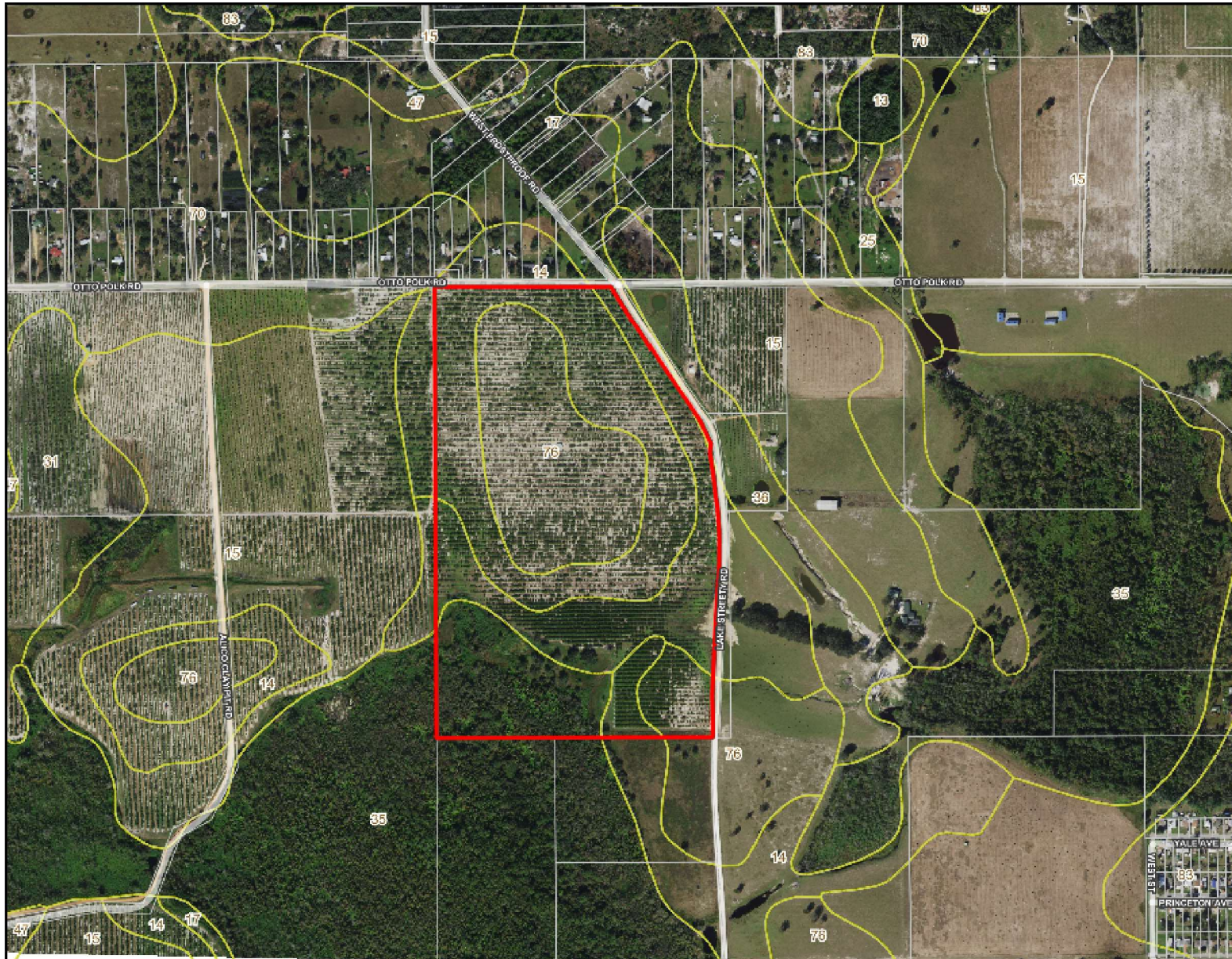


- County Boundaries
- Polygons Drawing
- Lines Drawing
- Labels Drawing
- Points Drawing
- Streets Mapwise
- Parcel Outlines
- Water
- Wetland Hardwoods
- Bay Swamps
- Mangrove Swamps
- Shrub Swamps
- Bottomland Hardwood Forest
- Mixed Wetland Hardwoods
- Wetlands Coniferous Forest
- Cypress
- Pond Pine
- Wetlands Forested Mixed
- Freshwater Marshes
- Saltwater Marshes
- Wet Prairies
- Emergent Aquatic Vegetation
- Mixed Scrub-Shrub Wetlands
- Non-Vegetated Wetlands

CODE	DESC	ACRES
6150	Stream And Lake Swamps (Bottomland)	8.4
<b>TOTAL WETLANDS</b>		<b>8.4</b>
<b>TOTAL UPLANDS</b>		<b>82.5</b>
<b>TOTAL ACRES</b>		<b>90.8</b>

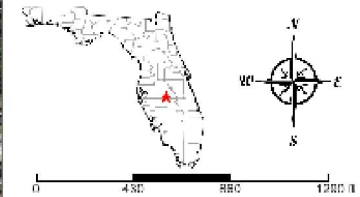


©2023 SVN© SVN | Saunders Ralston Danziger Real Estate® is a registered trademark licensed to SVN Shared Value Networks. Any information displayed should be verified and is not guaranteed to be accurate by SVN Saunders Ralston Danziger. You may not copy or use this material without written consent from SVN Saunders Ralston Danziger.

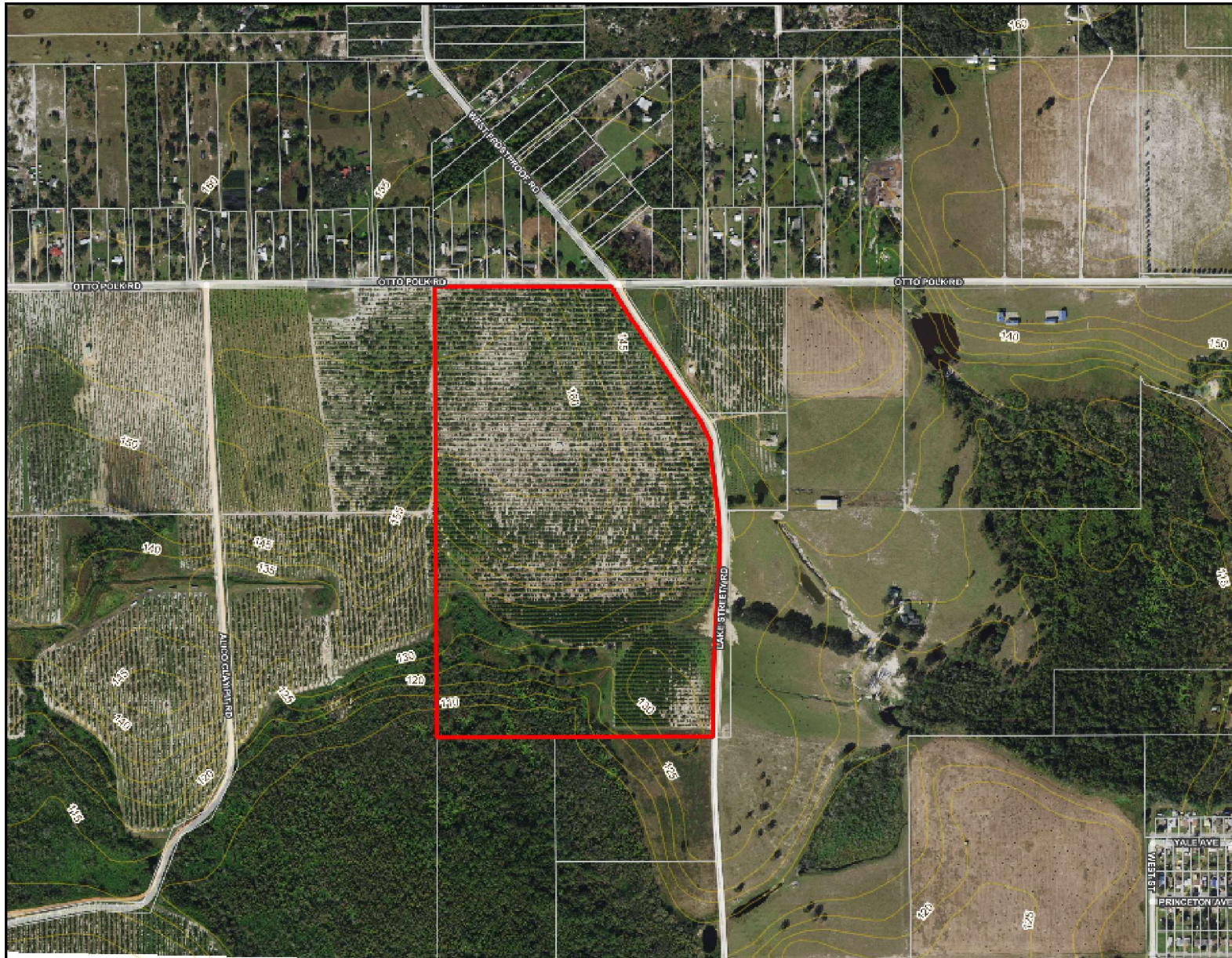


- County Boundaries
- Polygons Drawing
- Lines Drawing
- Labels Drawing
- Points Drawing
- Streets MapWide
- Parcel Outlines
- Soils Boundaries

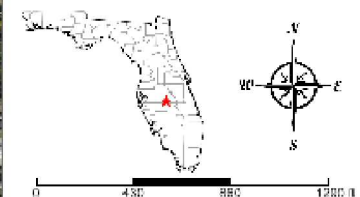
CODE	DESC	ACRES
14	Sperr Sand, 0 To 5 Percent Slopes	30
76	Millhopper Fine Sand, 0 To 5 Percent Slopes	28
17	Smyrne And Myakka Fine Sands	19
35	Hontoon Muck	13
36	Basinger Mucky Fine Sand, Depressional	0
TOTAL =		90.8459347575041 acres



©2023 SVN. SVN | Saunders Ralston Danziger Real Estate is a registered trademark. Licensed to SVN Shared Value Network. Any information displayed should be verified and is not guaranteed to be accurate by SVN Saunders Ralston Danziger. You may not copy or use this material without written consent from SVN Saunders Ralston Danziger.



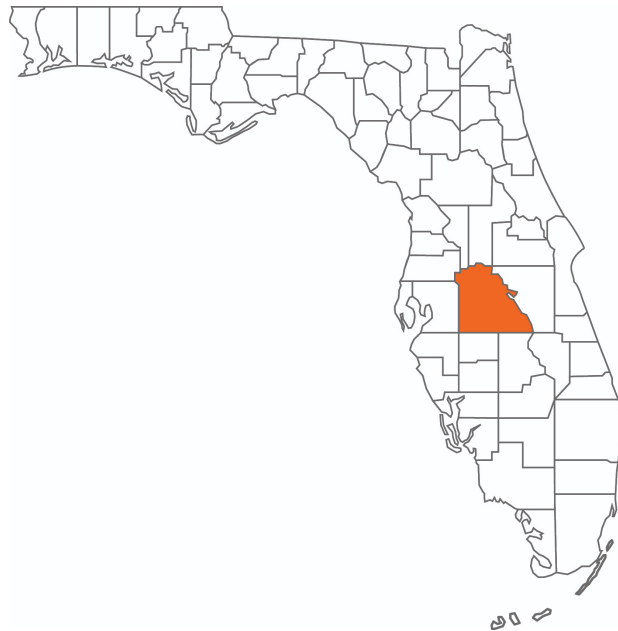
- County Boundaries
- Polygons Drawing
- Lines Drawing
- Labels Drawing
- Points Drawing
- Streets MapWise
- Parcel Outlines
- Five Foot Contours
- Five Foot Contours2



©2023 SVN®. SVN | Saunders Ralston Danziger Real Estate® is a registered trademark. Licensed to SVN Shared Value Network®. Any information displayed should be verified and is not guaranteed to be accurate by SVN Saunders Ralston Danziger. You may not copy or use this material without written consent from SVN Saunders Ralston Danziger.







## POLK COUNTY FLORIDA

Founded	1861	Density	386.5 [2019]
County Seat	Bartow	Population	775,084 [2023]
Area	1,875 sq. mi.	Website	polk-county.net

In Florida, Polk County is a leading contributor to the state's economy and politics. Concerning the local economy, industries like citrus, cattle, agriculture, and phosphate have all played extremely vital roles in Polk County. An increase in tourist revenue has also significantly contributed to the county's economic growth in recent years. As the heart of Central Florida, Polk County's location between the Tampa and Orlando Metropolitan Areas has aided in the development and growth of the area. Residents and visitors alike are drawn to the unique character of the county's numerous heritage sites, cultural venues, stunning natural landscapes, and plentiful outdoor activities.



**DANIEL LANIER**

Senior Advisor

daniel.lanier@svn.com

Direct: 877.518.5263 x377 | Cell: 863.698.2971

**PROFESSIONAL BACKGROUND**

Daniel Lanier is a Senior Advisor at SVN | Saunders Ralston Dantzler Real Estate in Lakeland, Florida.

Previously, Daniel was a founder and managing partner of Sawmill Citrus Nursery. With years of experience in Central Florida's agricultural industry, his knowledge and expertise extend to and beyond commercial beef cattle, citrus, nursery, and row crop farming.

At SVN SRD, Daniel's specialties encompass a wide range of land types, including ranches, citrus groves, and agricultural land. From livestock to produce, his expertise has assisted clients in various land transactions throughout the Central Florida real estate market.

Daniel has also worked in crop insurance since 2011. This experience, now combined with his role as a real estate advisor, has allowed him to service clients all over the southeastern United States, further solidifying himself as an expert in this field.

Growing up in Central Florida, Daniel graduated from Fort Meade High School and South Florida State College. He and his wife, Randi, have been married since 2015. Together, they are proud parents to both a son and a daughter.

- The Florida Farm Bureau State Young Farmers and Ranchers Leadership Group (2016-2018)

SVN | Saunders Ralston Dantzler  
1723 Bartow Rd  
Lakeland, FL 33801



# ONE OF AMERICA'S BEST BROKERAGES



One of America's  
Best Brokerages



APEX 2022 Top  
National Producer



Most Influential  
Business Leaders



Largest Commercial  
Real Estate Brokers  
in Tampa Bay



Ranked 210 on Inc.  
5000 Regional List



For more information visit [www.SVNsaunders.com](http://www.SVNsaunders.com)

**HEADQUARTERS**

1723 Bartow Rd  
Lakeland, FL 33801  
863.648.1528

**ORLANDO**

605 E Robinson Street, Suite 410  
Orlando, Florida 32801  
386.438.5896

**NORTH FLORIDA**

356 NW Lake City Avenue  
Lake City, Florida 32055  
352.364.0070

**GEORGIA**

203 E Monroe Street  
Thomasville, Georgia 31792  
229.299.8600

©2024 Saunders Ralston Dantzler Real Estate. All SVN® Offices Independently Owned and Operated SVN | Saunders Ralston Dantzler Real Estate is a full-service land and commercial real estate brokerage representing buyers, sellers, investors, institutions, and landowners since 1996. We are recognized nationally as an authority on all types of land, including agriculture, ranch, recreation, and residential development. Our commercial real estate services include property management, leasing and tenant representation, valuation, business brokerage, and advisory and counseling services for office, retail, industrial, and multifamily properties. Our firm also features an auction company, a forestry division, international partnerships, and extensive expertise in conservation easements. Located in Florida, Georgia, and Alabama, we provide proven leadership and collaborative expertise backed by the strength of the SVN® global platform.

