

Owner's Consent

I, the undersigned, hereby authorize the surveyor to make all necessary measurements and to set all necessary monuments and to execute all necessary documents in connection with the survey of the above described property.

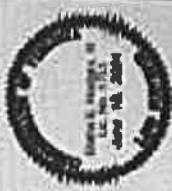
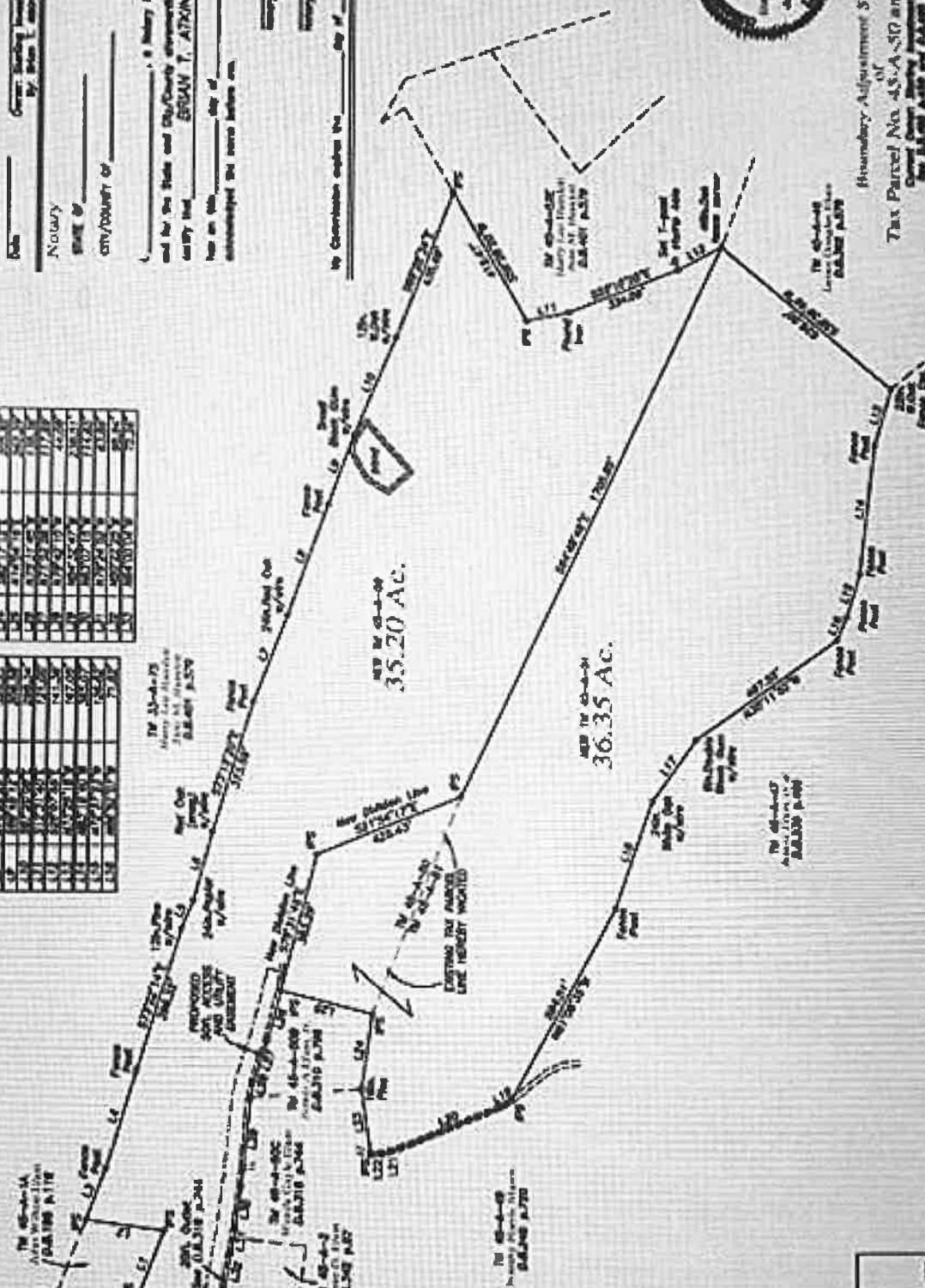
Date: _____
 By: Gregory S. Smith, LLC
 Notary Public

State of: _____
 County of: _____

Witnessed by: _____
 and for the State and County of _____
 County of: BRANFORD, ALABAMA
 on this _____ day of _____, 20____

to Commission expires the _____ day of _____, 20____
 Survey Number: _____

Lot	Area (Ac.)	Area (Sq. Ft.)
1	0.10	6,917.74
2	0.10	6,917.74
3	0.10	6,917.74
4	0.10	6,917.74
5	0.10	6,917.74
6	0.10	6,917.74
7	0.10	6,917.74
8	0.10	6,917.74
9	0.10	6,917.74
10	0.10	6,917.74
11	0.10	6,917.74
12	0.10	6,917.74
13	0.10	6,917.74
14	0.10	6,917.74
15	0.10	6,917.74
16	0.10	6,917.74
17	0.10	6,917.74
18	0.10	6,917.74
19	0.10	6,917.74
20	0.10	6,917.74
21	0.10	6,917.74
22	0.10	6,917.74
23	0.10	6,917.74
24	0.10	6,917.74
25	0.10	6,917.74
26	0.10	6,917.74
27	0.10	6,917.74
28	0.10	6,917.74
29	0.10	6,917.74
30	0.10	6,917.74
31	0.10	6,917.74
32	0.10	6,917.74
33	0.10	6,917.74
34	0.10	6,917.74
35	0.10	6,917.74
36	0.10	6,917.74
37	0.10	6,917.74
38	0.10	6,917.74
39	0.10	6,917.74
40	0.10	6,917.74
41	0.10	6,917.74
42	0.10	6,917.74
43	0.10	6,917.74
44	0.10	6,917.74
45	0.10	6,917.74
46	0.10	6,917.74
47	0.10	6,917.74
48	0.10	6,917.74
49	0.10	6,917.74
50	0.10	6,917.74
51	0.10	6,917.74
52	0.10	6,917.74
53	0.10	6,917.74
54	0.10	6,917.74
55	0.10	6,917.74
56	0.10	6,917.74
57	0.10	6,917.74
58	0.10	6,917.74
59	0.10	6,917.74
60	0.10	6,917.74
61	0.10	6,917.74
62	0.10	6,917.74
63	0.10	6,917.74
64	0.10	6,917.74
65	0.10	6,917.74
66	0.10	6,917.74
67	0.10	6,917.74
68	0.10	6,917.74
69	0.10	6,917.74
70	0.10	6,917.74
71	0.10	6,917.74
72	0.10	6,917.74
73	0.10	6,917.74
74	0.10	6,917.74
75	0.10	6,917.74
76	0.10	6,917.74
77	0.10	6,917.74
78	0.10	6,917.74
79	0.10	6,917.74
80	0.10	6,917.74
81	0.10	6,917.74
82	0.10	6,917.74
83	0.10	6,917.74
84	0.10	6,917.74
85	0.10	6,917.74
86	0.10	6,917.74
87	0.10	6,917.74
88	0.10	6,917.74
89	0.10	6,917.74
90	0.10	6,917.74
91	0.10	6,917.74
92	0.10	6,917.74
93	0.10	6,917.74
94	0.10	6,917.74
95	0.10	6,917.74
96	0.10	6,917.74
97	0.10	6,917.74
98	0.10	6,917.74
99	0.10	6,917.74
100	0.10	6,917.74



Boundary Adjustment Survey
 of
 Tax Parcel No. 45-A-50 and 45-A-51
 County of BRANFORD, ALABAMA
 in the State of ALABAMA
 in the District of Charleston County, Virginia
 Date of Survey: June 18, 2024

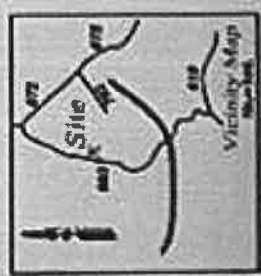
Maxey & Associates, P.C.
 Land Surveyors & Engineers • Professional
 P.O. Box 100 • Fayetteville, Virginia 22801



State Route
 No. 693
 300 ft

Using GPS with L2D
 accuracy of 1 cm or better
 under ideal conditions

- Notes:
1. All lot areas are shown in the table above.
 2. All lot areas were determined by the surveyor using a total station and measured distances and bearings.
 3. All lot areas were determined by the surveyor using a total station and measured distances and bearings.
 4. All lot areas were determined by the surveyor using a total station and measured distances and bearings.

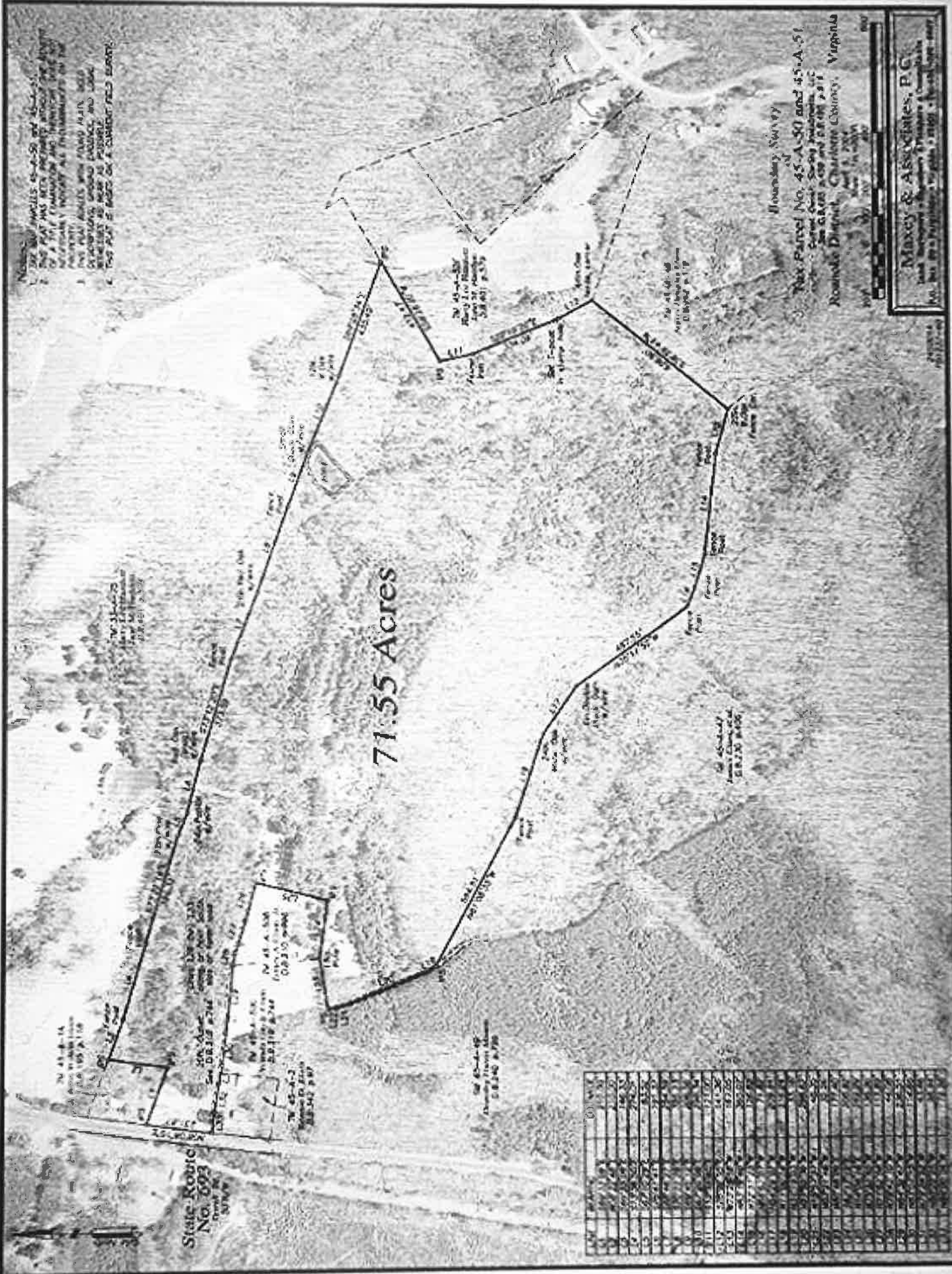


NOTES:
 1. THE 800 PARCELS 45-A-50 AND 45-A-51
 THIS PLAN HAS BEEN PREPARED ACCORDING TO THE
 REQUIREMENTS OF THE VIRGINIA SURVEYING BOARD
 AND THE VIRGINIA SURVEYING ACT OF 1954.
 2. THE PLAN SHOWS THE BOUNDARIES OF THE
 PARCELS AS DETERMINED BY THE SURVEY.
 3. THE PLAN SHOWS THE BOUNDARIES OF THE
 PARCELS AS DETERMINED BY THE SURVEY.
 4. THE PLAN SHOWS THE BOUNDARIES OF THE
 PARCELS AS DETERMINED BY THE SURVEY.

Boundary Survey
 of
 Parcels No. 45-A-50 and 45-A-51
 Surveyed by
 Moxey & Associates, P.C.
 Route 1, Charlottesville, Virginia
 Date: 10/15/2014

Moxey & Associates, P.C.
 1000 North 1st Street, Charlottesville, VA 22902
 Tel: 800-833-8888

71.55 Acres



Station	Bearing	Distance
1	S 89° 15' 00" E	100.00'
2	N 89° 15' 00" W	100.00'
3	S 89° 15' 00" E	100.00'
4	N 89° 15' 00" W	100.00'
5	S 89° 15' 00" E	100.00'
6	N 89° 15' 00" W	100.00'
7	S 89° 15' 00" E	100.00'
8	N 89° 15' 00" W	100.00'
9	S 89° 15' 00" E	100.00'
10	N 89° 15' 00" W	100.00'
11	S 89° 15' 00" E	100.00'
12	N 89° 15' 00" W	100.00'
13	S 89° 15' 00" E	100.00'
14	N 89° 15' 00" W	100.00'
15	S 89° 15' 00" E	100.00'
16	N 89° 15' 00" W	100.00'
17	S 89° 15' 00" E	100.00'
18	N 89° 15' 00" W	100.00'
19	S 89° 15' 00" E	100.00'
20	N 89° 15' 00" W	100.00'
21	S 89° 15' 00" E	100.00'
22	N 89° 15' 00" W	100.00'
23	S 89° 15' 00" E	100.00'
24	N 89° 15' 00" W	100.00'
25	S 89° 15' 00" E	100.00'
26	N 89° 15' 00" W	100.00'
27	S 89° 15' 00" E	100.00'
28	N 89° 15' 00" W	100.00'
29	S 89° 15' 00" E	100.00'
30	N 89° 15' 00" W	100.00'
31	S 89° 15' 00" E	100.00'
32	N 89° 15' 00" W	100.00'
33	S 89° 15' 00" E	100.00'
34	N 89° 15' 00" W	100.00'
35	S 89° 15' 00" E	100.00'
36	N 89° 15' 00" W	100.00'
37	S 89° 15' 00" E	100.00'
38	N 89° 15' 00" W	100.00'
39	S 89° 15' 00" E	100.00'
40	N 89° 15' 00" W	100.00'
41	S 89° 15' 00" E	100.00'
42	N 89° 15' 00" W	100.00'
43	S 89° 15' 00" E	100.00'
44	N 89° 15' 00" W	100.00'
45	S 89° 15' 00" E	100.00'
46	N 89° 15' 00" W	100.00'
47	S 89° 15' 00" E	100.00'
48	N 89° 15' 00" W	100.00'
49	S 89° 15' 00" E	100.00'
50	N 89° 15' 00" W	100.00'
51	S 89° 15' 00" E	100.00'
52	N 89° 15' 00" W	100.00'
53	S 89° 15' 00" E	100.00'
54	N 89° 15' 00" W	100.00'
55	S 89° 15' 00" E	100.00'
56	N 89° 15' 00" W	100.00'
57	S 89° 15' 00" E	100.00'
58	N 89° 15' 00" W	100.00'
59	S 89° 15' 00" E	100.00'
60	N 89° 15' 00" W	100.00'
61	S 89° 15' 00" E	100.00'
62	N 89° 15' 00" W	100.00'
63	S 89° 15' 00" E	100.00'
64	N 89° 15' 00" W	100.00'
65	S 89° 15' 00" E	100.00'
66	N 89° 15' 00" W	100.00'
67	S 89° 15' 00" E	100.00'
68	N 89° 15' 00" W	100.00'
69	S 89° 15' 00" E	100.00'
70	N 89° 15' 00" W	100.00'
71	S 89° 15' 00" E	100.00'
72	N 89° 15' 00" W	100.00'
73	S 89° 15' 00" E	100.00'
74	N 89° 15' 00" W	100.00'
75	S 89° 15' 00" E	100.00'
76	N 89° 15' 00" W	100.00'
77	S 89° 15' 00" E	100.00'
78	N 89° 15' 00" W	100.00'
79	S 89° 15' 00" E	100.00'
80	N 89° 15' 00" W	100.00'
81	S 89° 15' 00" E	100.00'
82	N 89° 15' 00" W	100.00'
83	S 89° 15' 00" E	100.00'
84	N 89° 15' 00" W	100.00'
85	S 89° 15' 00" E	100.00'
86	N 89° 15' 00" W	100.00'
87	S 89° 15' 00" E	100.00'
88	N 89° 15' 00" W	100.00'
89	S 89° 15' 00" E	100.00'
90	N 89° 15' 00" W	100.00'
91	S 89° 15' 00" E	100.00'
92	N 89° 15' 00" W	100.00'
93	S 89° 15' 00" E	100.00'
94	N 89° 15' 00" W	100.00'
95	S 89° 15' 00" E	100.00'
96	N 89° 15' 00" W	100.00'
97	S 89° 15' 00" E	100.00'
98	N 89° 15' 00" W	100.00'
99	S 89° 15' 00" E	100.00'
100	N 89° 15' 00" W	100.00'