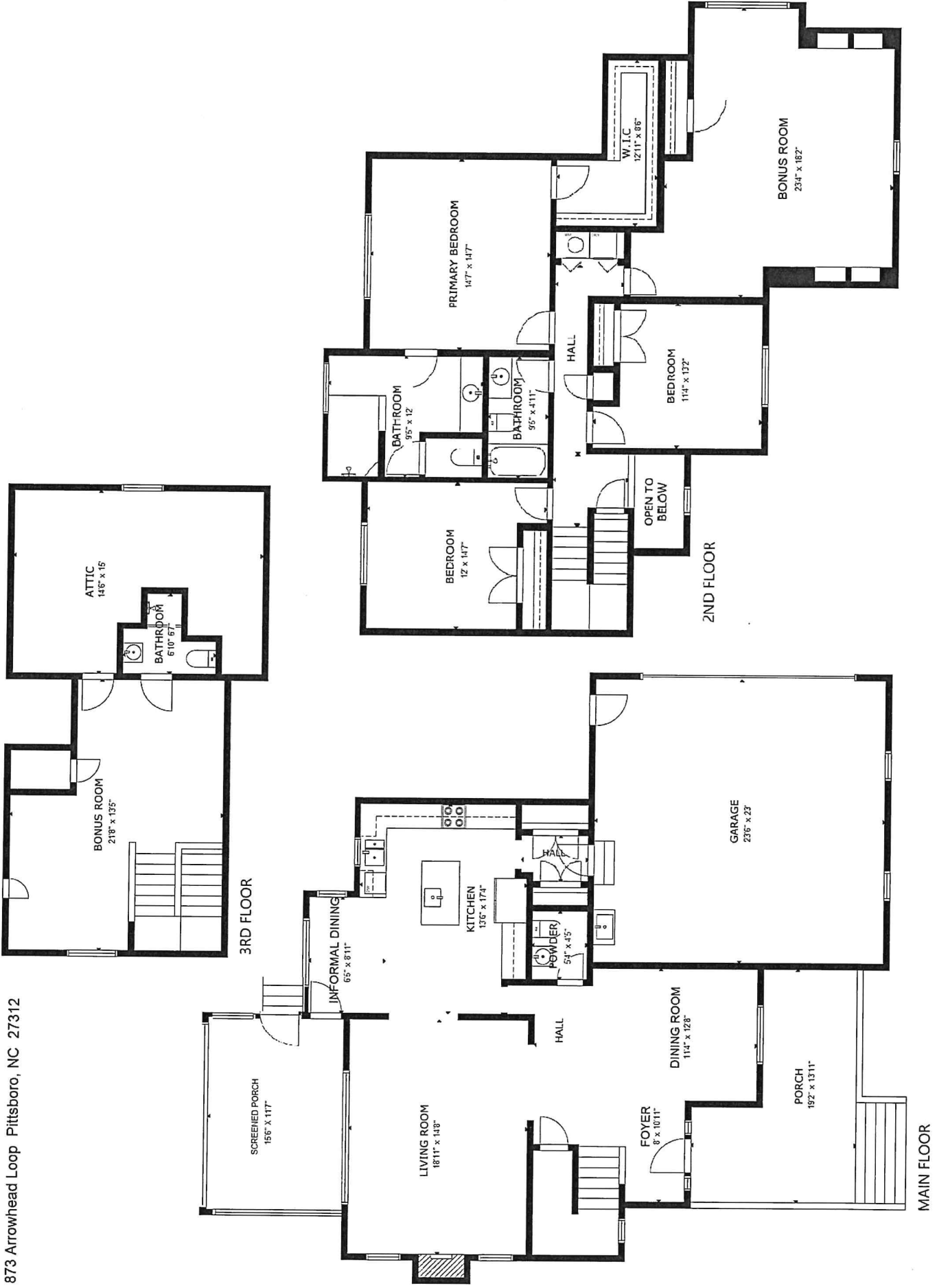


873 Arrowhead Loop Pittsboro, NC 27312



The following dimensions are approximate interior wall to wall dimensions, measured on site, from the widest portion of each room, then calculated to Feet/Inches from Rounded Decimal Feet. Information deemed reliable, but not guaranteed.

Room Dimension Summary Address: 873 Arrowhead Loop Pittsboro, NC 27312
Prepared for Eric Andrews Measured by Laura Fuelleman

The following dimensions are approximate interior wall to wall dimensions, measured from the widest portion of each room.
Information deemed reliable, but not guaranteed.

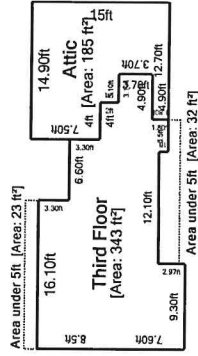
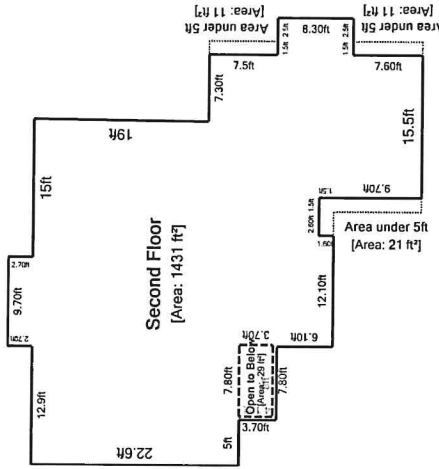
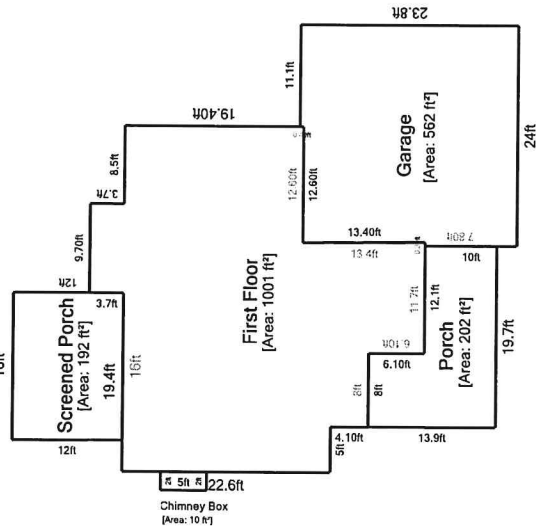
	Length in Feet - Parallel to Front Facade	Width in Feet - Perpendicular to Front Facade	Parallel to Front Facade			Perpendicular to Front Facade	
Main Floor	Decimal Feet		Calculated Feet/Inches from Rounded Decimal Feet				
Foyer	8	10.9	8 ft	0 in	by	10 ft	11 in
Dining Room	11.3	12.7	11 ft	4 in	by	12 ft	8 in
Half Bathroom	5.3	4.4	5 ft	4 in	by	4 ft	5 in
Living Room	18.9	14.7	18 ft	11 in	by	14 ft	8 in
Kitchen	13.5	17.3	13 ft	6 in	by	17 ft	4 in
Informal Dining	6.4	8.9	6 ft	5 in	by	8 ft	11 in
Garage Entry	4.3	4.4	4 ft	4 in	by	4 ft	5 in
Front Porch	19.2	13.9	19 ft	2 in	by	13 ft	11 in
Screened Porch	15.5	11.6	15 ft	6 in	by	11 ft	7 in
Garage	23.5	23	23 ft	6 in	by	23 ft	0 in

	Decimal Feet		Feet/Inches				
Second Floor							
Primary Bedroom	14.6	14.6	14 ft	7 in	by	14 ft	7 in
Primary Bathroom	9.4	12	9 ft	5 in	by	12 ft	0 in
Walk in Closet	12.9	8.5	12 ft	11 in	by	8 ft	6 in
Bedroom - Front	11.3	13.2	11 ft	4 in	by	13 ft	2 in
Bathroom	9.4	4.9	9 ft	5 in	by	4 ft	11 in
Bedroom - Back	12	14.6	12 ft	0 in	by	14 ft	7 in
Bonus Room	23.3	18.2	23 ft	4 in	by	18 ft	2 in
Laundry	3	5.6	3 ft	0 in	by	5 ft	7 in

	Decimal Feet		Calculated Feet/Inches from Rounded Decimal Feet				
3rd Floor							
Recreation Room	21.7	13.4	21 ft	8 in	by	13 ft	5 in
Closet	3	3	3 ft	0 in	by	3 ft	0 in
Bathroom	6.8	6.6	6 ft	10 in	by	6 ft	7 in
Attic	14.5	15	14 ft	6 in	by	15 ft	0 in

Sketch

Case Number: 20240916-2 File Number: 202409
 Address: 873 Arrowhead Loop
 City / State: Pittsboro / NC Zip / County: 27312 /
 Borrower:
 Lender or Client: Eric Andrews
 Prepared By: Laura Fuelleman



20 ft

Living Area	
Second Floor	1431.19 ft² Porch
Open to Below	-28.86 ft² Garage
First Floor	1001.2 ft² Screened Porch
Third Floor	343.22 ft² Area under 5ft
	Area under 5ft
	Area under 5ft
	Chimney Box
	Area under 5ft
	Area under 5ft
	Attic
Total Living Area (rounded):	2747 ft² Total Non-Living Area (rounded):
	202.46 ft²
	562.02 ft²
	192 ft²
	20.96 ft²
	11.40 ft²
	11.25 ft²
	10.00 ft²
	22.54 ft²
	32.50 ft²
	185.27 ft²
	1250 ft²

This document is designed to be a record of total finished square feet to aid the listing agent in gathering the square feet facts of the property. Measurements are obtained by physical observation of the property by a certified Home Measurement Specialist. The method of measuring the subject home is in accordance with the NC Residential Square Footage Guidelines and those approved by the American National Standards Institute, Inc (ANSI), which are recognized by the North Carolina Real Estate Commission as comparable standards. Within every measurement project, some degree of art of opinion may be applied as well as rounding as set forth in the standards. Final finished square footage will be rounded to the nearest whole number with the goal of being within a 5% margin of error. Information deemed reliable, but not guaranteed.