

Unlock Your Dream Retreat

# WILLOW CREEK

+/-350-acre recreational tract

Price: \$2,623,250

Walker County, TX



Listed By:



**936.295.2500**

**Andy Flack**

**Principal/Broker**

**Homeland Properties**

**936-295-2500**

Created by

RAYDIENT  RURAL



Discover the ultimate recreational retreat with this expansive +/- 350-acre tract nestled in the heart of Walker County, Texas. Willow Creek offers a unique blend of natural beauty and versatile land use, making it an ideal canvas for your outdoor adventures and hunting excursions.

Spanning +/- 350 acres, Willow Creek has ample space for a variety of recreational activities like hunting, ATVing, hiking, horseback riding, mountain biking and more.

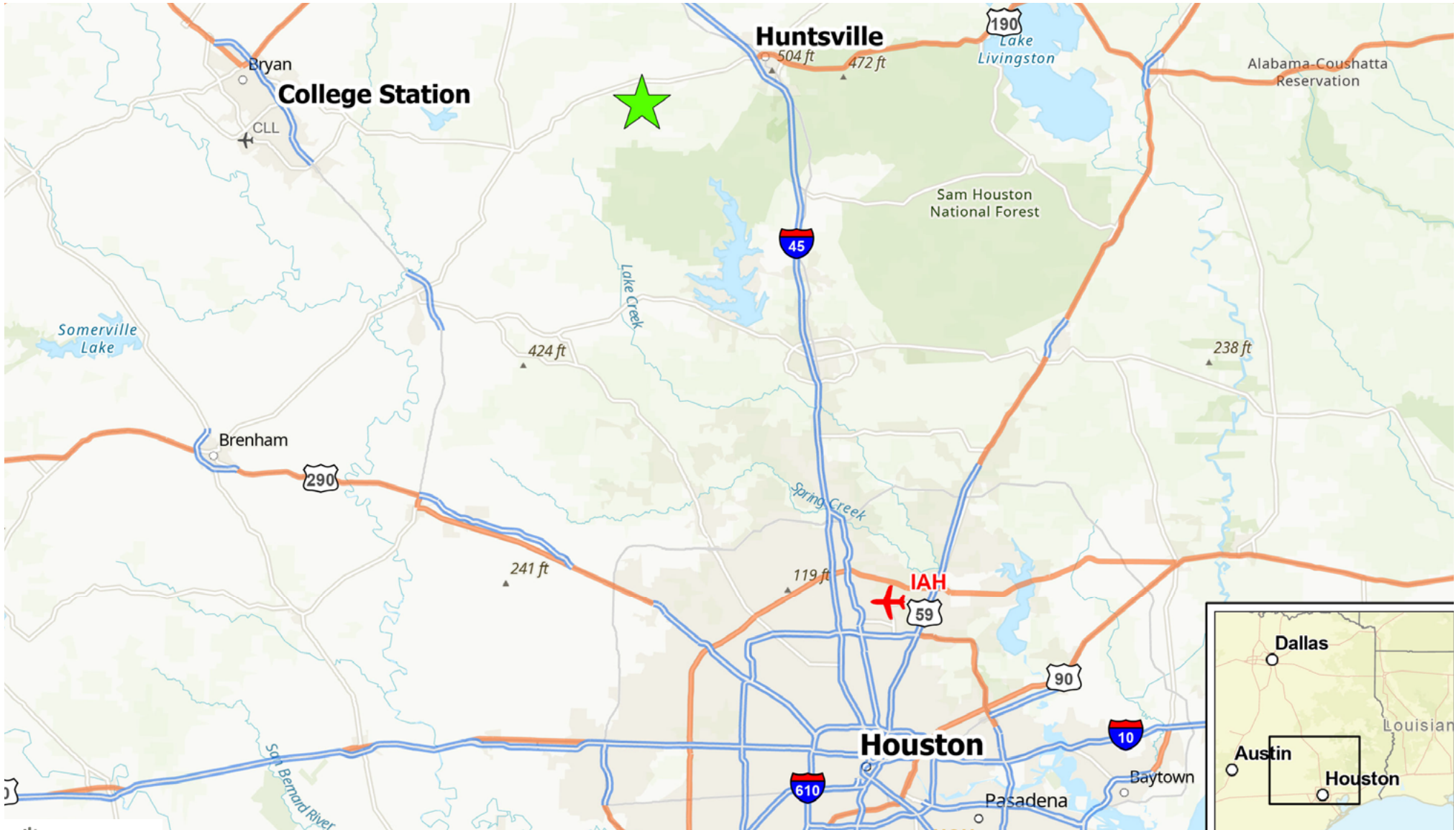
Whether you're interested in hunting, hiking, or creating your own private oasis, this land provides the freedom to design your ideal retreat. The diverse habitat of the tract supports a variety of wildlife, including deer, hogs, and turkey with ample cover and natural forage to attract game for your hunting pursuits. Create your own hiking trails or ATV paths to explore the natural beauty and enjoy the great outdoors on your own terms. Willow Creek provides ample options for creating your own rural escape for family gatherings, weekend getaways and more.

Situated just a short drive from Huntsville, College Station and Houston, this remarkable tract provides both seclusion and accessibility. Experience the tranquility of rural Texas while still being conveniently close to essential amenities and services. Don't miss this rare opportunity to own a substantial piece of Walker County's natural landscape.

DISCLAIMER: PRICE IS SUBJECT TO CHANGE WITHOUT NOTICE. PHOTOGRAPHS AND DRAWINGS ARE AN ARTIST'S CONCEPTION AND ARE NOT INTENDED TO SHOW SPECIFIC DETAILING. THE DRAWINGS MAY NOT BE TO SCALE, ARE NOT NECESSARILY A REPRESENTATION OF PROPERTY, AND ARE SUBJECT TO CHANGE WITHOUT NOTICE.

# Unlock Your Dream Retreat

## WILLOW CREEK



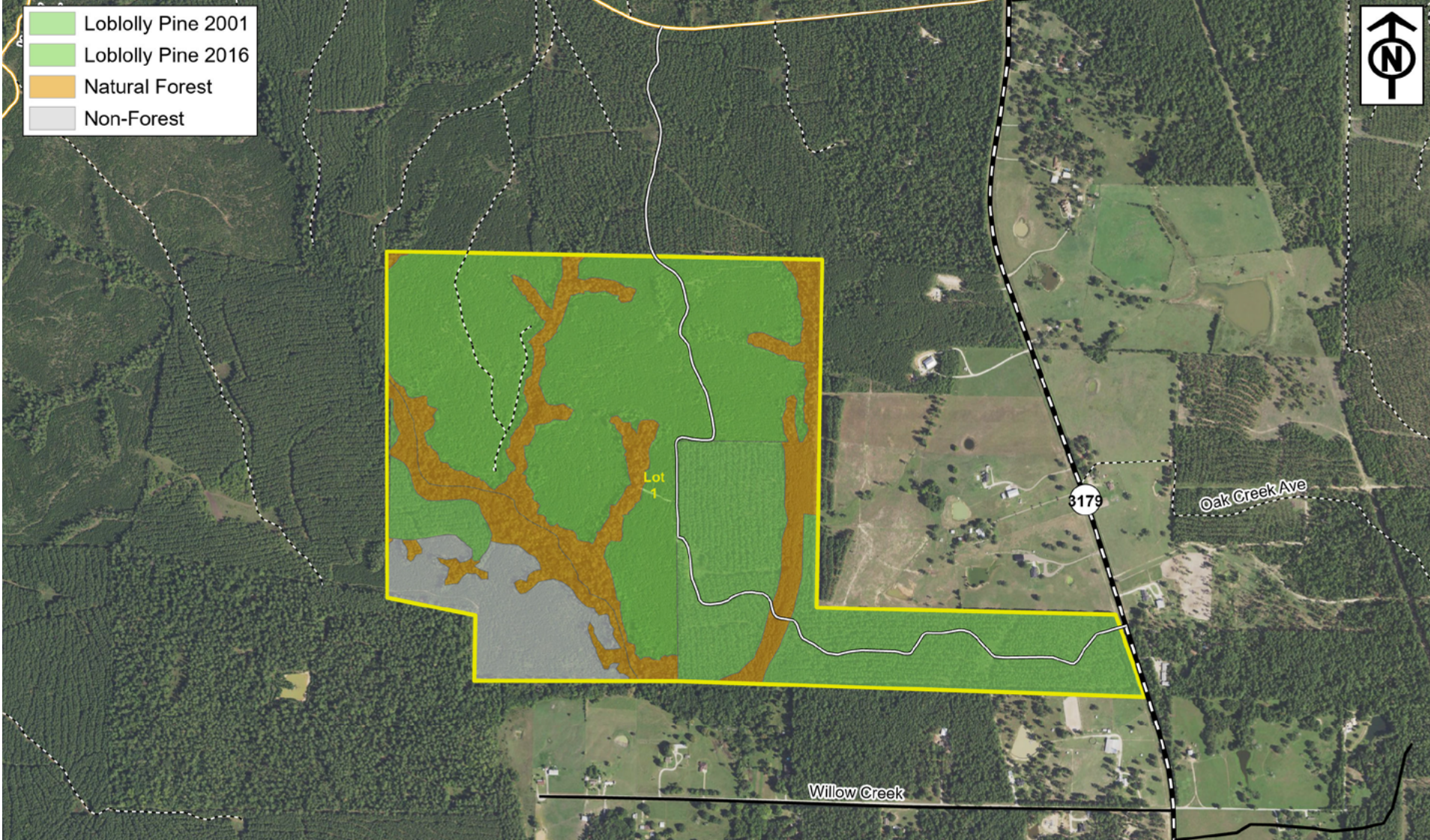
**936.295.2500**

**Andy Flack**  
Principal/Broker  
Homeland Properties

PRICE IS SUBJECT TO CHANGE WITHOUT NOTICE. PHOTOGRAPHS AND DRAWINGS ARE AN ARTIST'S CONCEPTION AND ARE NOT INTENDED TO SHOW SPECIFIC DETAILING. THE DRAWINGS MAY NOT BE TO SCALE, ARE NOT NECESSARILY A REPRESENTATION OF PROPERTY, AND ARE SUBJECT TO CHANGE WITHOUT NOTICE.

# Unlock Your Dream Retreat

## WILLOW CREEK



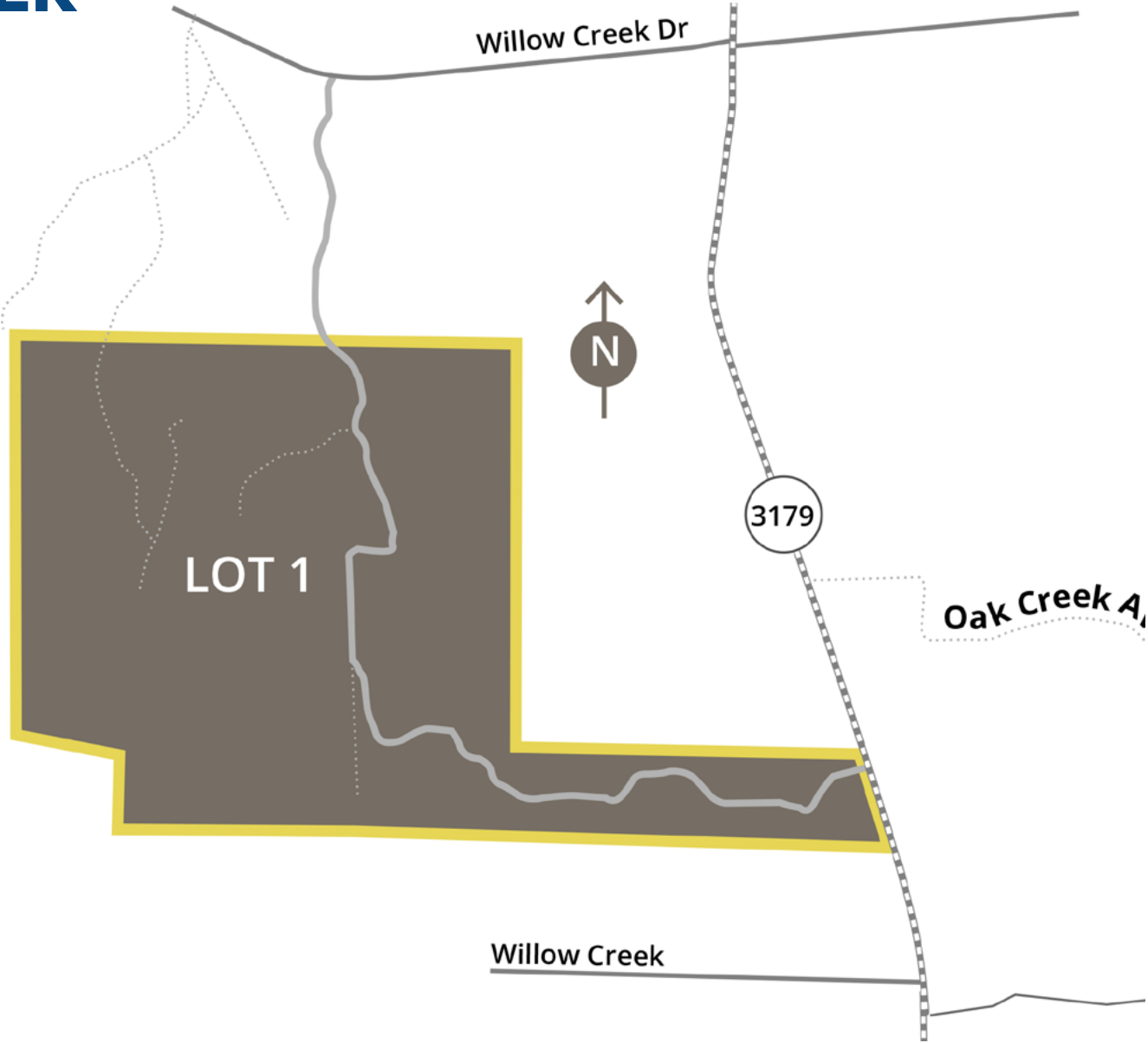
**936.295.2500**

**Andy Flack**  
Principal/Broker  
Homeland Properties

PRICE IS SUBJECT TO CHANGE WITHOUT NOTICE. PHOTOGRAPHS AND DRAWINGS ARE AN ARTIST'S CONCEPTION AND ARE NOT INTENDED TO SHOW SPECIFIC DETAILING. THE DRAWINGS MAY NOT BE TO SCALE, ARE NOT NECESSARILY A REPRESENTATION OF PROPERTY, AND ARE SUBJECT TO CHANGE WITHOUT NOTICE.

# Unlock Your Dream Retreat

## WILLOW CREEK



LOT #	ACREAGE
1	+/-350



**936.295.2500**

**Andy Flack**  
Principal/Broker  
Homeland Properties

PRICE IS SUBJECT TO CHANGE WITHOUT NOTICE. PHOTOGRAPHS AND DRAWINGS ARE AN ARTIST'S CONCEPTION AND ARE NOT INTENDED TO SHOW SPECIFIC DETAILING. THE DRAWINGS MAY NOT BE TO SCALE, ARE NOT NECESSARILY A REPRESENTATION OF PROPERTY, AND ARE SUBJECT TO CHANGE WITHOUT NOTICE.