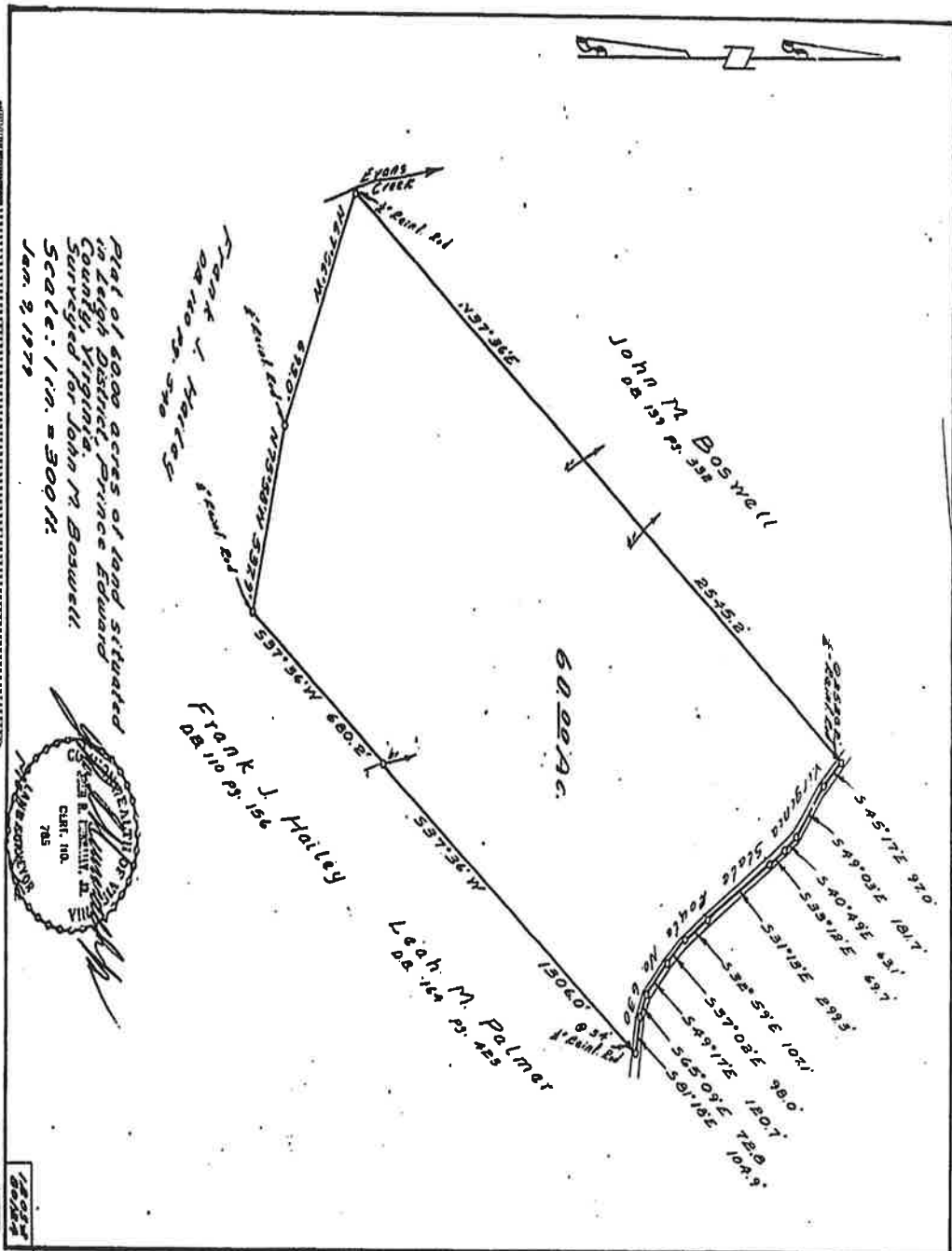


Plat of 6000 acres of land situated in Leigh District, Prince Edward County, Virginia, surveyed for John M. Boswell, Jan. 9, 1979. SCALE: 1 in. = 300 ft.



Virginia:

In the Clerk's Office of the Circuit Court of Prince Edward County,
 February 1, 1979.

The foregoing Plat was this day presented in said office along with and as a part of Deed from John M. Boswell, et al, to Andrew N. Bony and Wife, which said Deed has been recorded in Deed Book 210, at Page 81.

Teste:
James R. Conroy, Jr., Clerk