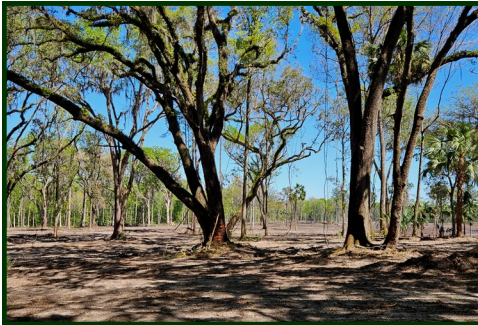


# 983±AC

## BUY ALL OR PART

REDDICK, NW MARION CO., FLORIDA



	Tax Parcel ID #	Acres	\$/Ac.	Price
(1)	01825-000-00	225	\$10,995	\$2,473,875
(2)	02689-000-00	260	\$10,495	\$2,728,700
(1/2)	01825 & 02689	485.5	\$9,495	\$4,609,823
3	01874-000-00	62	\$15,995	\$991,690
6	01876-000-00	22	\$17,995	\$395,890
(3/6)	01874 & 01876	84	\$15,495	\$1,301,580
(4)	02691-000-00	125.8	\$15,995	\$2,012,171
(5)	03154-000-00	128	\$15,995	\$2,047,360
4/5	02691 & 03154	253.8	\$14,995	\$3,805,731
(7)	03158-000-00	55	\$14,995	\$824,725
(8)	03150-000-00	105	\$14,995	\$1,574,475
(7/8)	03158 & 03150	159.4	\$13,995	\$2,230,131

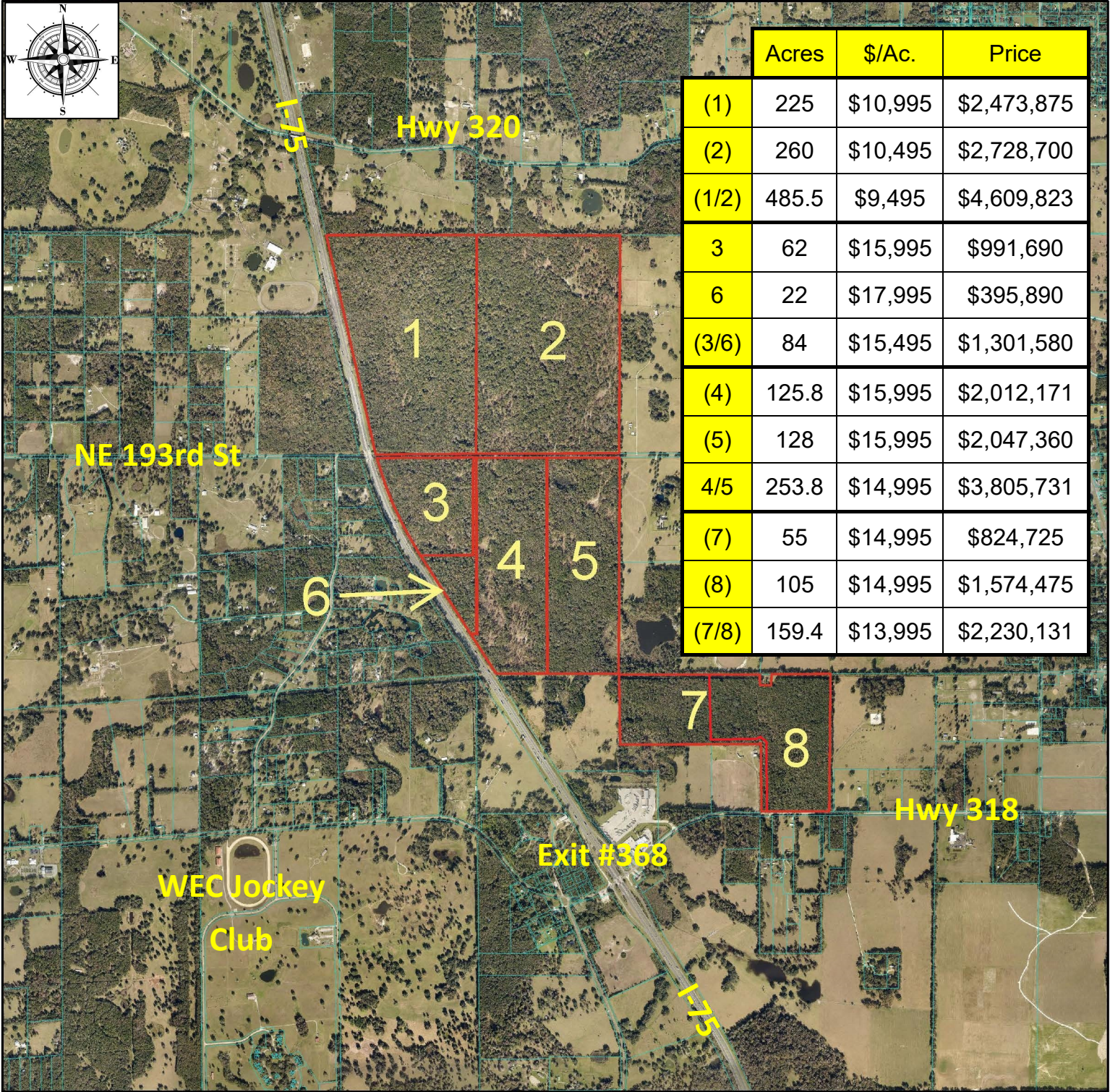
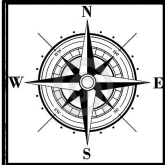
Data contained herein is for informational purposes only. Buyer must perform their own inspections on the land being offered for sale in this brochure.



Phone: (352) 401-3755

Mobile: (352) 459-5283

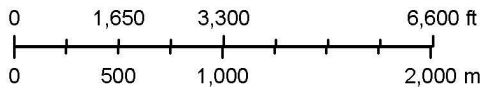
[www.mcbrideland.com](http://www.mcbrideland.com)



	Acres	\$/Ac.	Price
(1)	225	\$10,995	\$2,473,875
(2)	260	\$10,495	\$2,728,700
(1/2)	485.5	\$9,495	\$4,609,823
3	62	\$15,995	\$991,690
6	22	\$17,995	\$395,890
(3/6)	84	\$15,495	\$1,301,580
(4)	125.8	\$15,995	\$2,012,171
(5)	128	\$15,995	\$2,047,360
4/5	253.8	\$14,995	\$3,805,731
(7)	55	\$14,995	\$824,725
(8)	105	\$14,995	\$1,574,475
(7/8)	159.4	\$13,995	\$2,230,131

9/5/2024

1:36,112



Marion County Property Appraiser  
Marion County, FL

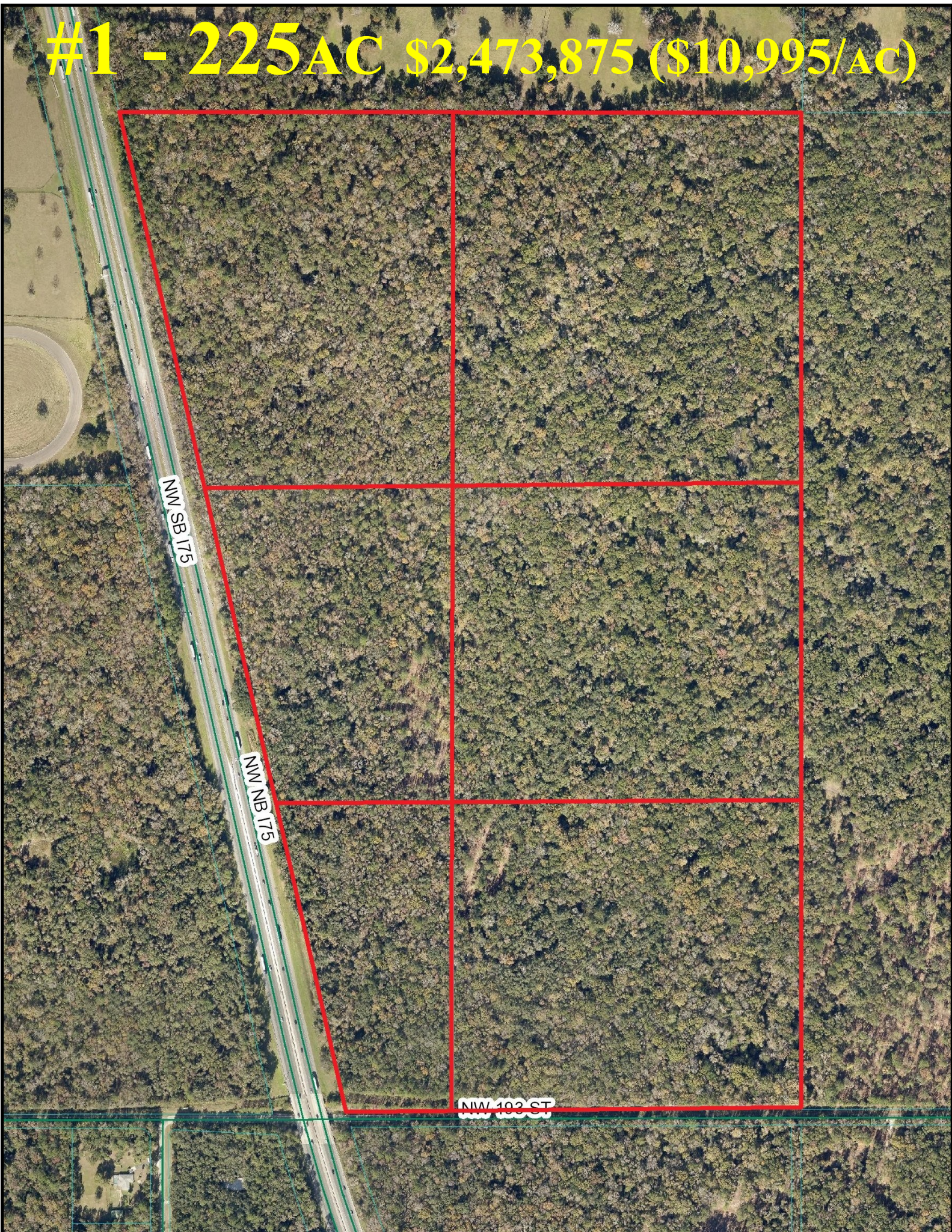
**DISCLAIMER:** This is a work in progress. This application was compiled by the Marion County Property Appraiser's Office solely for the governmental purpose of property assessment. These are NOT surveys. Our goal is to provide the most accurate data available, however, no warranties, expressed or implied are provided with this data, its use, or interpretation. All information subject to change without notice. Use at your own risk.

#1 - 225 AC \$2,473,875 (\$10,995/AC)

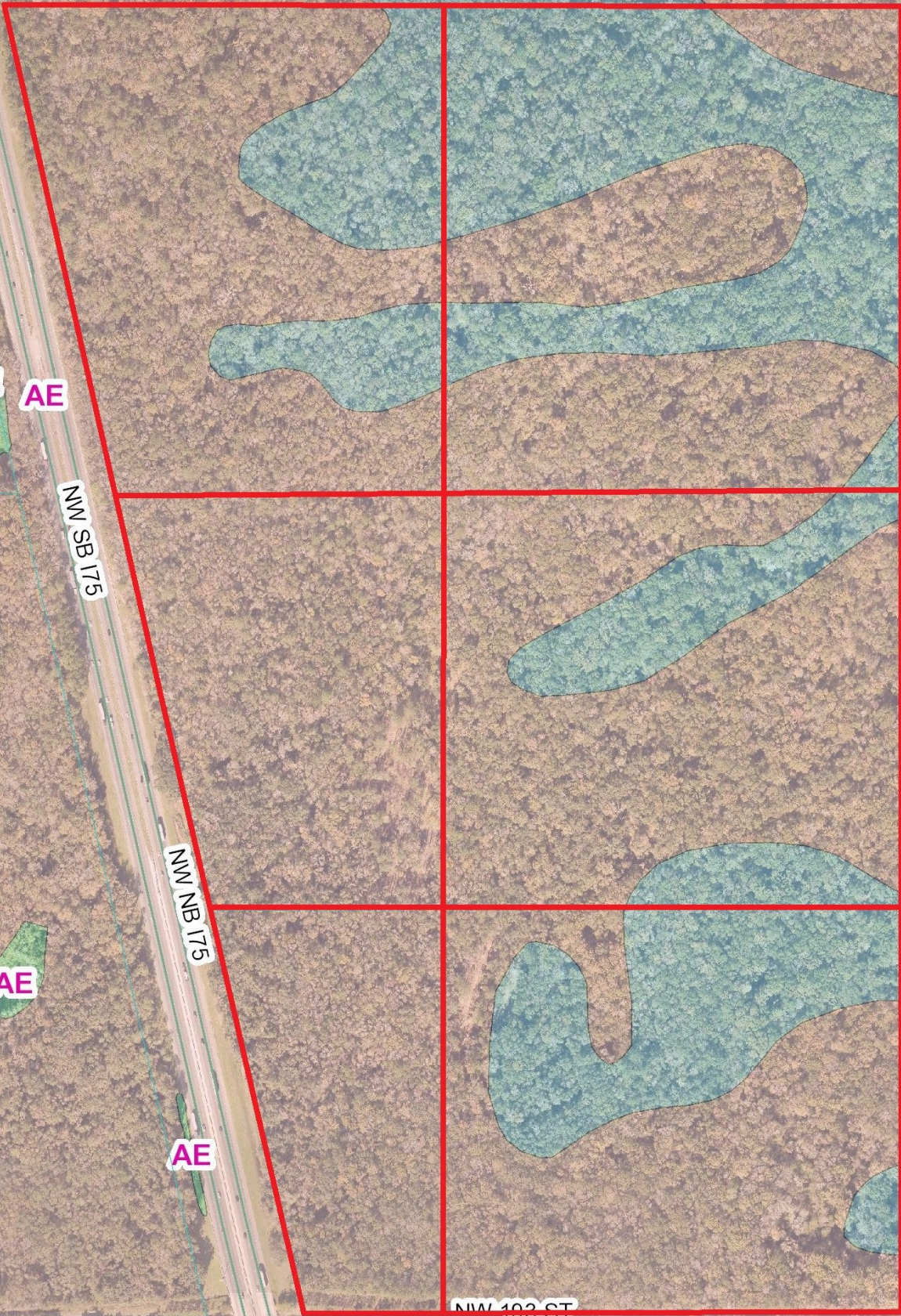
NW SB 175

NW NB 175

NW 102 ST



#1 - 225 AC \$2,473,875 (\$10,995/AC)



AE

AE

NW SB 175

NW NB 175

AE

AE

NW 103 ST

AE

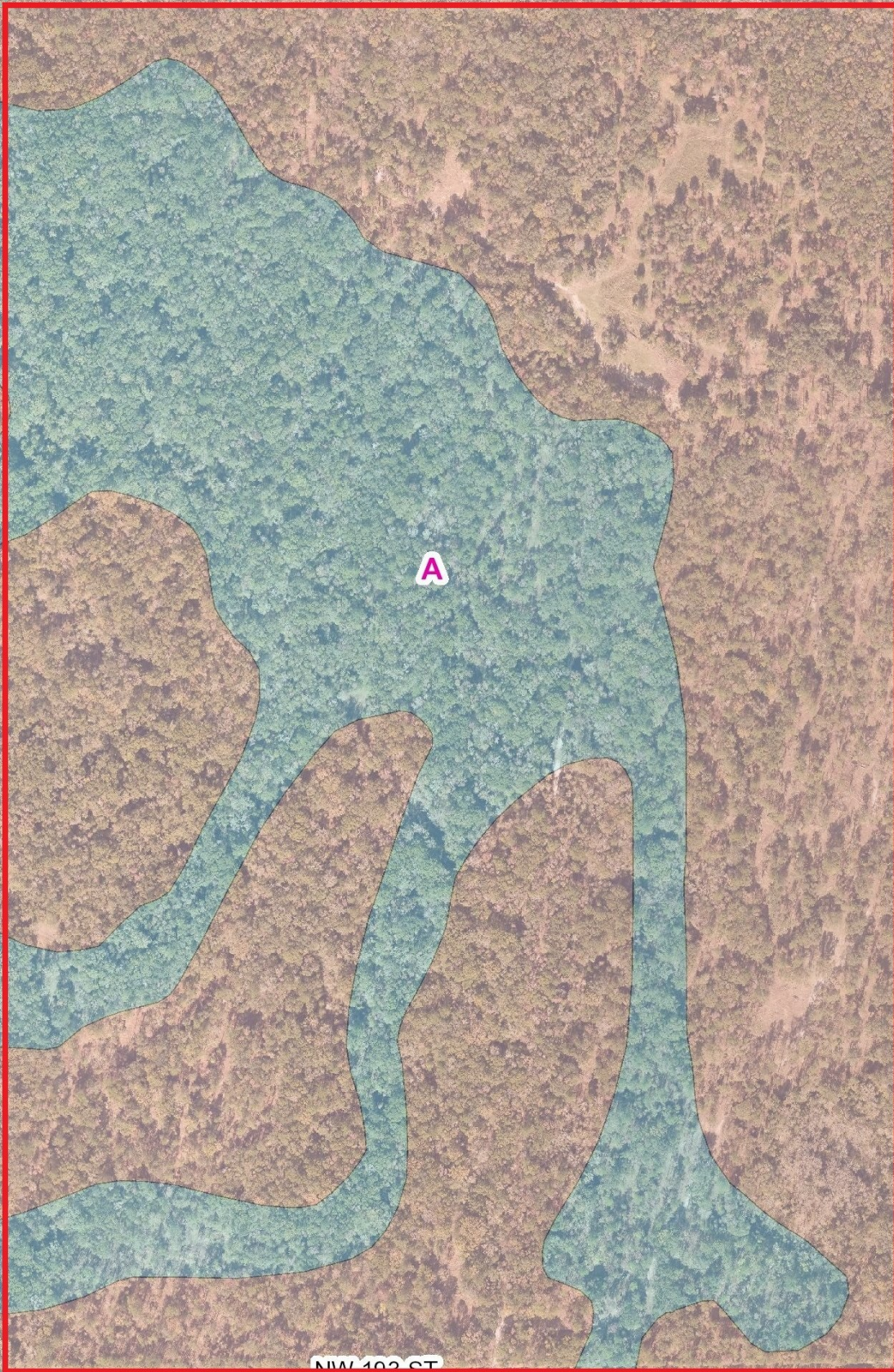
E

**#2 - 260 AC \$2,728,700 (\$10,495/AC)**



**NW 100 CT**

#2 - 260 AC \$2,728,700 (\$10,495/AC)



NW 100 ST

NW 193 ST

#3  
62 AC  
\$991,690  
(\$15,995/AC)

#6  
22 AC  
\$395,890  
(\$17,995/AC)

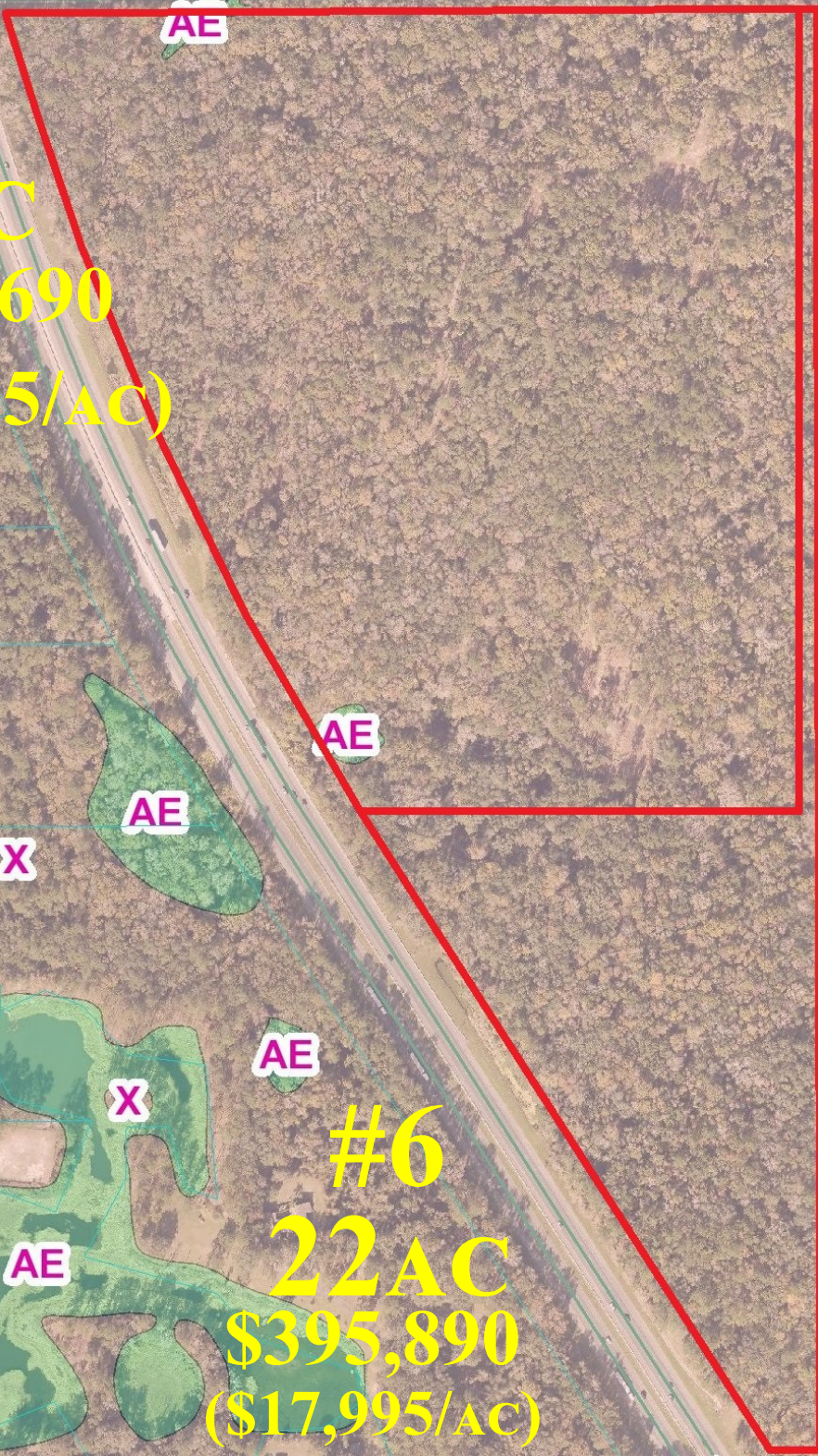
NW 186 ST

NW SB 175

27

NW 193 ST

#3  
62 AC  
\$991,690  
(\$15,995/AC)



#6  
22 AC  
\$395,890  
(\$17,995/AC)



NW SB 175

NW NB 175

W 186 ST

AE

AE

AE

AE

AE

X

AE

AE

X

AE

AE

AE



NW 193 ST

**#4**  
**125.8 AC**  
**\$2,012,171**  
**(\$15,995/AC)**

**#5**  
**128 AC**  
**\$2,047,360**  
**(\$15,995/AC)**

NW NB 175

NW SB 17

**253.8 AC - \$3,805,731 (\$14,995/AC)**

NW 193 ST

A

#4  
125.8 AC  
\$2,012,171  
(\$15,995/AC)

#5  
128 AC  
\$2,047,360  
(\$15,995/AC)

X

A

NW NB 175

NW SB 175

253.8 AC - \$3,805,731 (\$14,995/AC)

159.4AC - \$2,230,131 (\$13,995/AC)

#7

55AC

\$824,725  
(\$14,995/AC)

#8

105AC

\$1,573,876  
(\$14,995/AC)

Hwy 318

AVE

159.4AC - \$2,230,131 (\$13,995/ac)

#7

55AC

\$824,725  
(\$14,995/ac)

X

#8

105AC

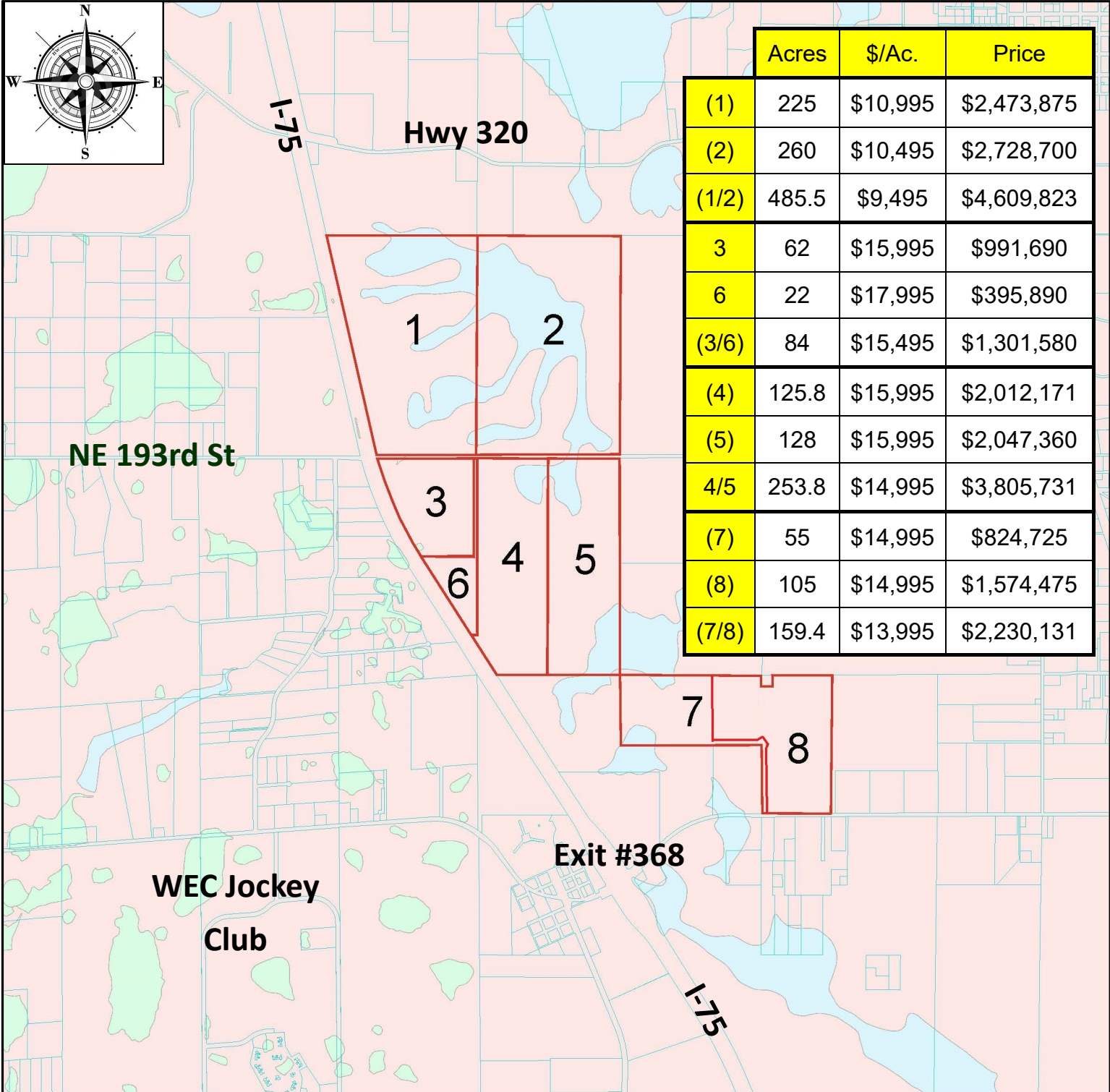
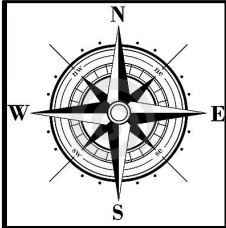
\$1,573,876  
(\$14,995/ac)

A

A

Hwy 318

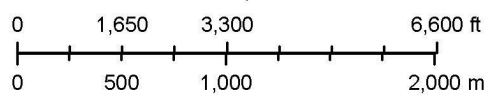
AVE



1:36,112

**FEMA Flood Plain Map**

9/5/2024



Marion County Property Appraiser  
Marion County, FL

**DISCLAIMER:** This is a work in progress. This application was compiled by the Marion County Property Appraiser's Office solely for the governmental purpose of property assessment. These are NOT surveys. Our goal is to provide the most accurate data available, however, no warranties, expressed or implied are provided with this data, its use, or interpretation. All information subject to change without notice. Use at your own risk.

# DIRECTIONS

983± ACRES • NW MARION CO., FL

