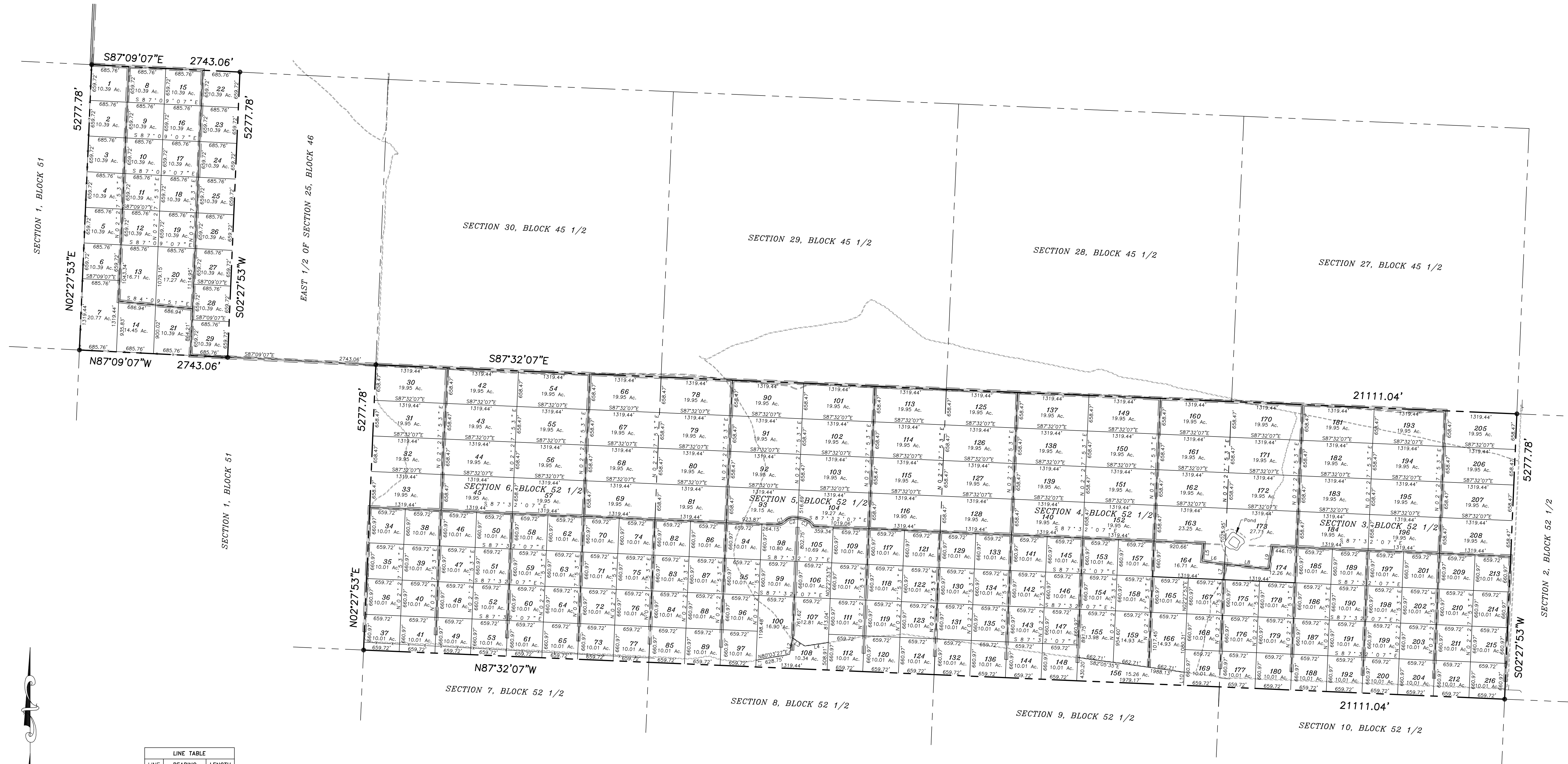


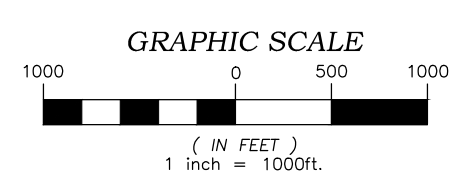
SUNRISE RANCHES

BEING SECTIONS 3, 4, 5, AND 6, BLOCK 52 1/2,
AND THE WEST HALF OF SECTION 25, BLOCK 46,
PUBLIC SCHOOL LAND,
HUDSPETH COUNTY, TEXAS
CONTAINING 2890.189 ACRES

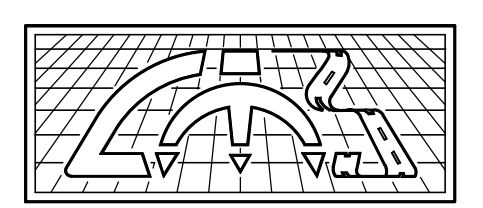


LINE	BEARING	LENGTH
L1	N02°27'53"E	123.47'
L2	N11°04'03"E	305.19'
L3	N57°20'47"W	267.09'
L4	S81°31'31"W	436.79'
L5	S05°55'40"W	337.20'
L6	S83°19'13"E	420.28'
L7	N02°27'53"E	293.50'
L8	S83°19'13"E	824.71'
L9	N09°14'01"E	431.10'
L10	N02°27'53"E	241.64'

CURVE TABLE					
CURVE	RADIUS	LENGTH	CHORD	BEARING	DELTA
C1	266.53'	189.35'	185.39'	N67°27'21"E	40°42'13"
C2	237.73'	247.22'	236.23'	S76°53'42"W	59°34'55"
C3	389.09'	343.18'	332.16'	S62°16'03"E	50°32'07"



60' Wide Road Easement



Land-Mark Professional Surveying, Inc.
1420. Bessemer Drive, Suite "A"
El Paso, Texas 79936
(915) 598-1300
Texas Licensed Surveying Firm
Registration Number 10125900
email: Larry@Land-marksurvey.com
"Serving Texas, New Mexico and Arizona"