



TM 81-A-4A
James R. Krogman
Nancy K. Krogman
 Inst.No. 201100834
 Plat Slide A-384#5

TM 67-A-21
Robert and Betsy Jenkins Living Trust
 Inst.No.160000036
 Plat See Inst.No.200802623

TM 81-A-11
Peaceful Acres, LLC
 Inst.No.201000939

L10	N51°00'11"W	127.88'
L11	N13°17'41"E	127.41'
L12	N22°23'15"W	108.30'
L13	S82°21'09"W	120.89'
L14	N26°57'50"W	64.97'
L15	N18°46'27"E	44.37'
L16	N47°39'09"E	79.24'
L17	N08°54'03"E	44.79'
L18	N30°33'49"W	210.29'
L19	S19°51'10"W	229.39'
L20	N10°45'16"E	153.19'

8in. Black Gum
 2.2' in RW
 5' Strip along entire frontage
 hereby dedicated to public use
 (0.22 Ac.)

LINE	BEARING	DISTANCE
L21	N22°32'15"E	85.36'
L22	N28°54'17"E	103.89'
L23	N27°25'16"E	237.73'
L24	N31°02'17"E	74.72'
L25	N07°11'38"E	26.06'
L26	N18°45'09"W	209.45'
L27	N66°10'27"E	10.31'
L28	S79°34'00"E	223.99'
L29	S79°34'00"E	201.23'
L30	S79°34'00"E	201.23'
L31	S79°34'00"E	205.31'
L32	N13°11'58"E	331.01'
L33	N13°11'58"E	343.39'
L34	N13°11'58"E	342.76'

TM 81-A-5
Mary Jenkins
Life Estate
 D.B.34 p.153
 P.B.5 p.160

State Route No. 612

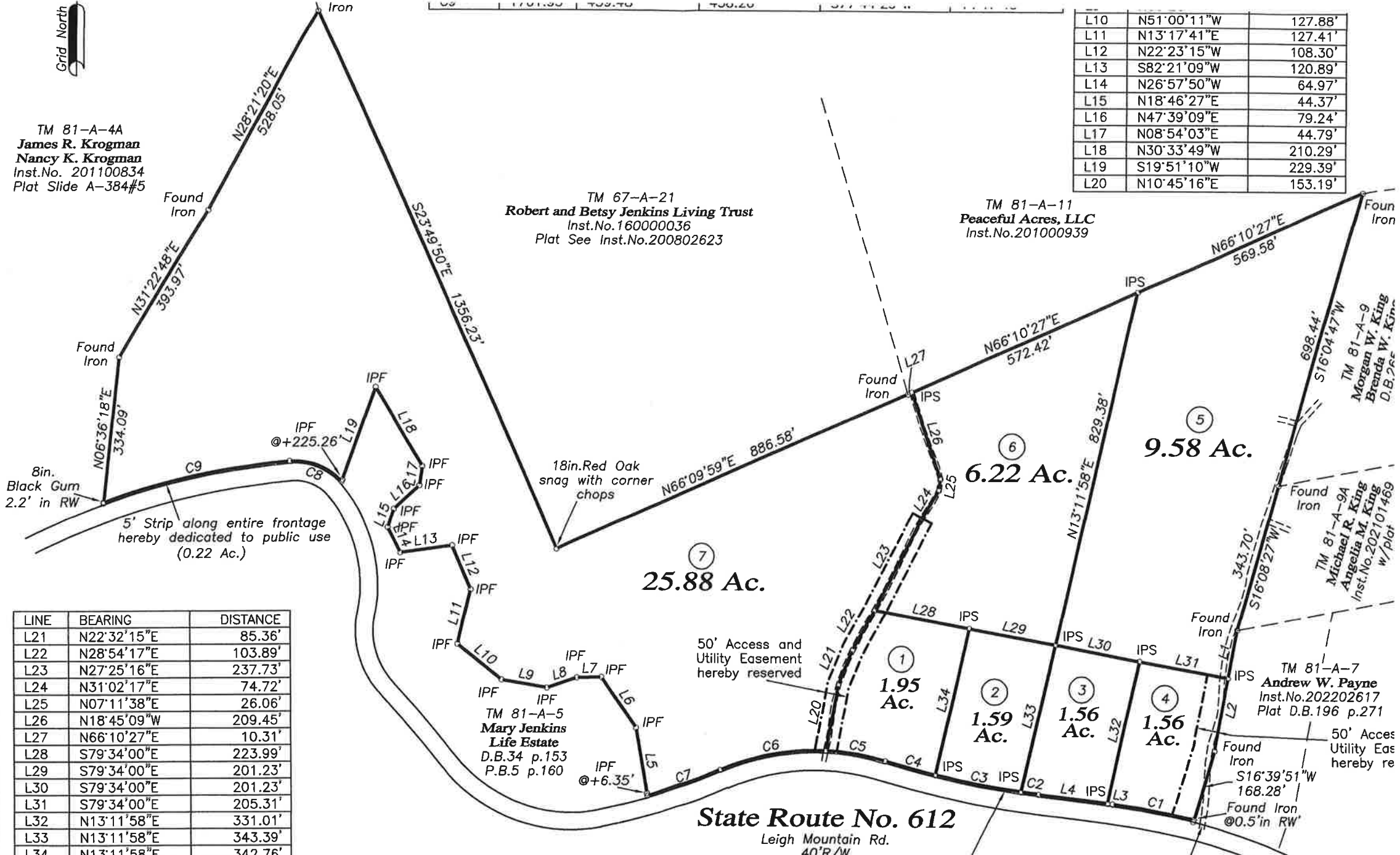
Leigh Mountain Rd.
 40'R/W

5' Strip along entire frontage
 hereby dedicated to public use
 (0.22 Ac.)

Existing Gravel Drive
 Right-of-way (width unknown)
 See D.B.157 p.441
 D.B.67 p.60

±0.6mi.
 To Rte. 696

Total Land Area prior to division: 48.56 Acres
 Total Land Area in Proposed Lots: 48.34 Acres
 Total Land Area dedicated to public use: 0.22 Acres
 Total Land Area in RESIDUE: 0.00 Acres



25.88 Ac.

6.22 Ac.

9.58 Ac.

1.95 Ac.

1.59 Ac.

1.56 Ac.

1.56 Ac.

TM 81-A-7
Andrew W. Payne
 Inst.No.202202617
 Plat D.B.196 p.271

TM 81-A-9
Morgan W. King
Brenda W. King
 D.B.265

TM 81-A-9A
Michael R. King
Angelina M. King
 Inst.No.202101469
 w/plat

50' Access
 Utility Eas
 hereby re

Found Iron
 S16°39'51"W
 168.28'
 Found Iron
 @0.5'in RW

Found Iron
 N66°10'27"E
 569.58'

Found Iron
 S16°04'47"W
 698.44'

Found Iron
 S16°08'27"W
 343.70'

Found Iron
 S16°08'27"W
 343.70'

Found Iron
 S16°08'27"W
 343.70'

IPS

IPS

IPS

IPS

IPS

IPS

IPS

IPS

IPS

IPS

IPS

IPS

IPS

IPS

IPS

IPS

IPS

IPS

IPS

IPS

IPS

IPS

IPS

IPS

IPS

IPS

IPS

IPS

IPS

IPS

IPS

IPS