



Planters Group

Commercial Real Estate



Acreage:
239+/- acres

Zoning:
Forest
Agriculture

Location:
Plantersville,
SC

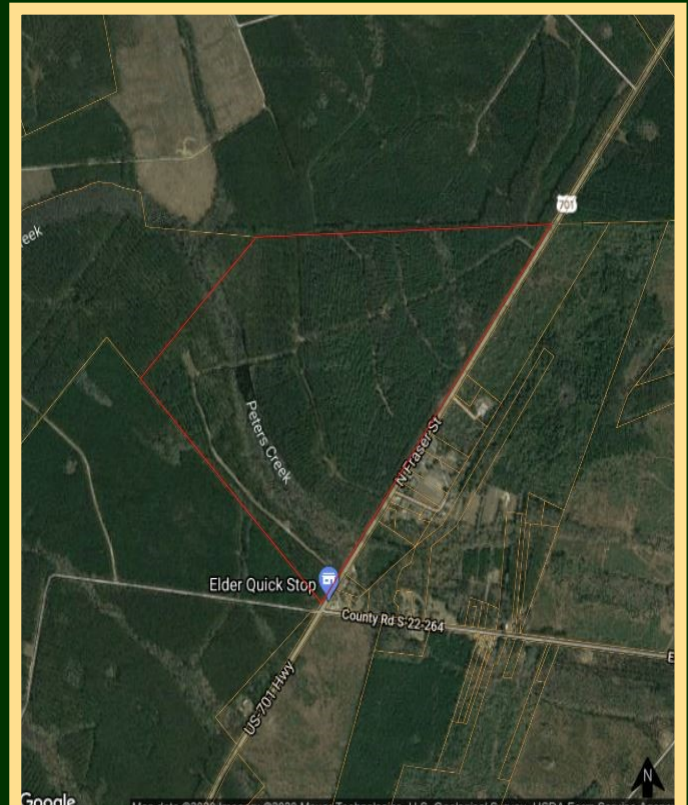
- Located on Highway 701
- 4836 feet of Highway 701 frontage
- 20+/- acre lake
- Duck impoundment sites
- Road system
- Merchantable pine timber
- Georgetown County TMS# 03-1006-015-00-00
- Water and Sewer Available

Price: \$2,000,000.00

Contact US At:

Phone: 843-449-0441

E-mail: info@wacclt.com



Planters Group



PLANTERS GROUP TRACT



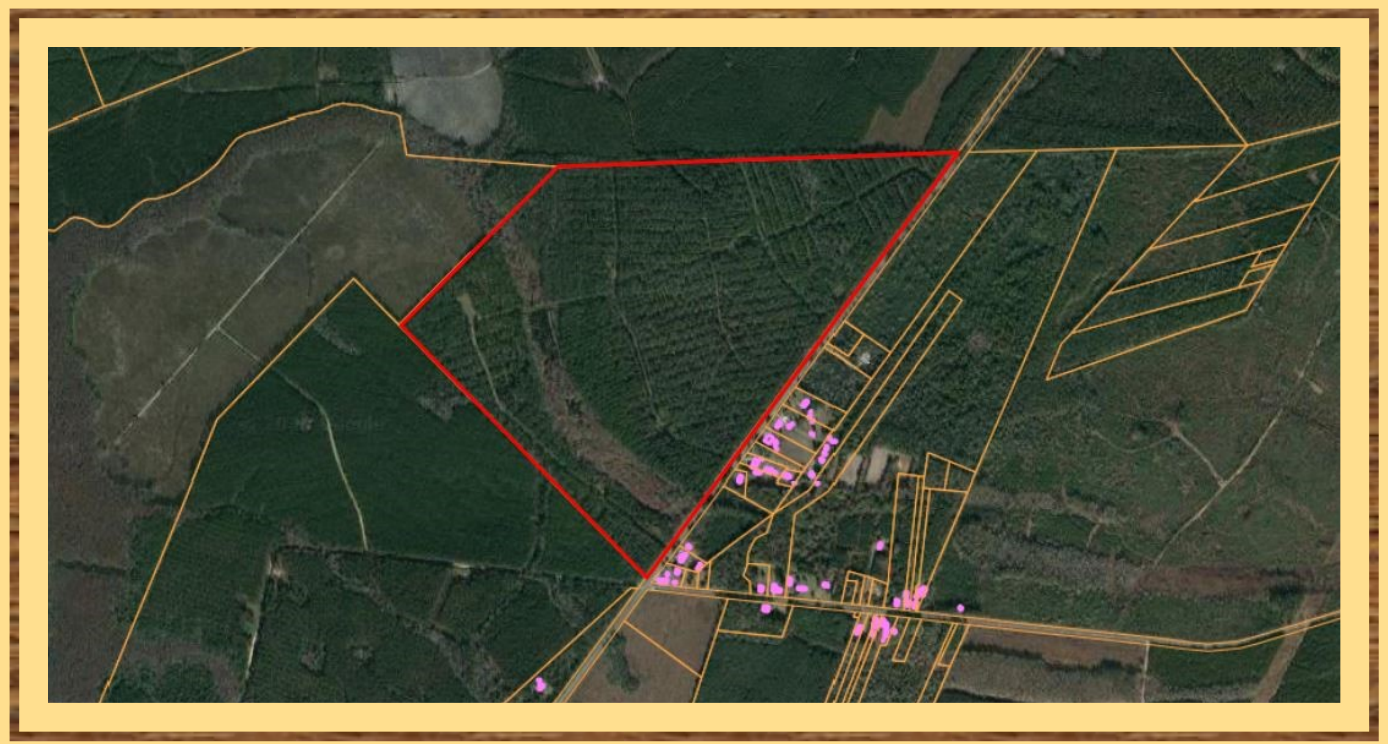
PLANTERS GROUP TRACT



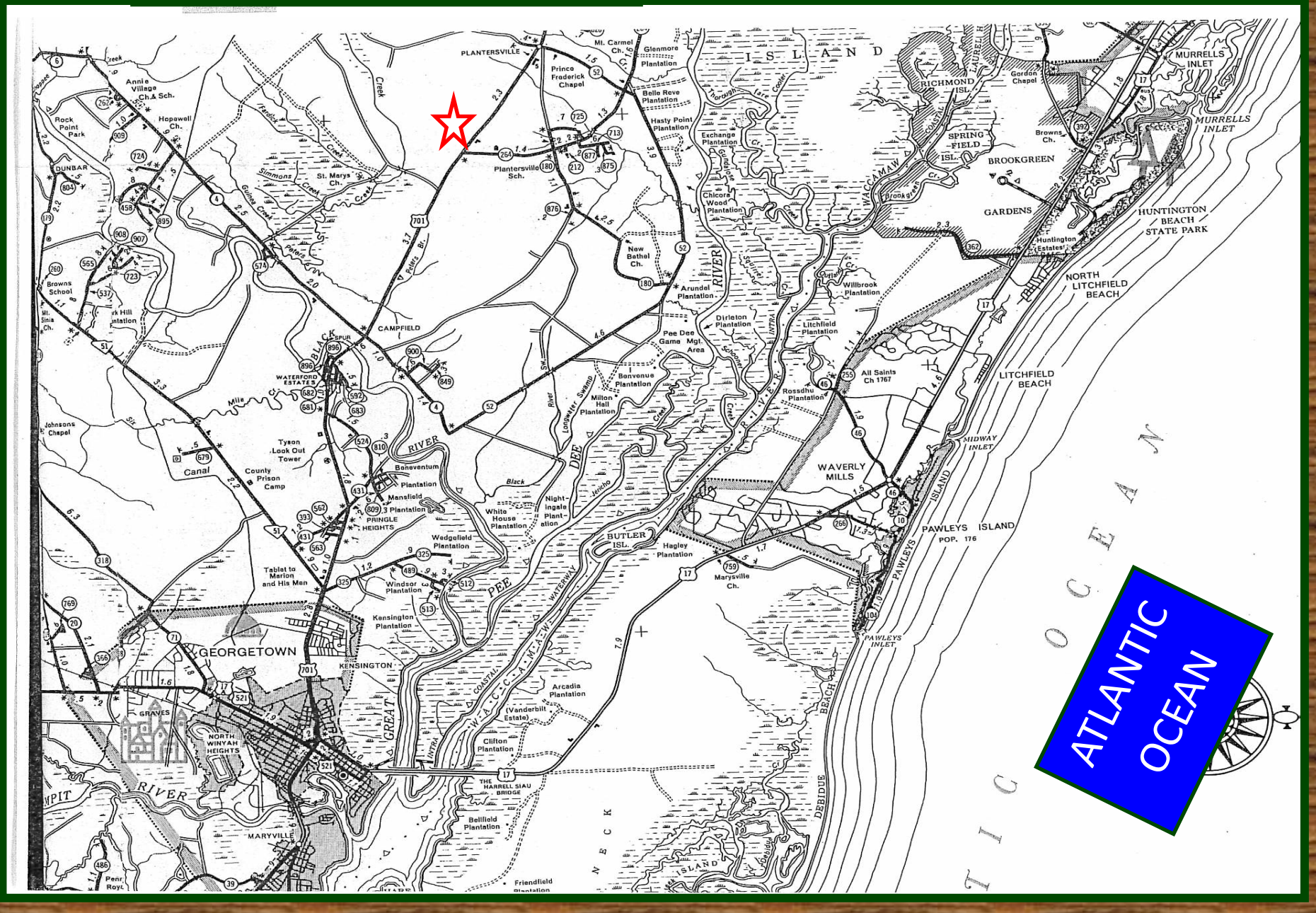
PLANTERS GROUP TRACT



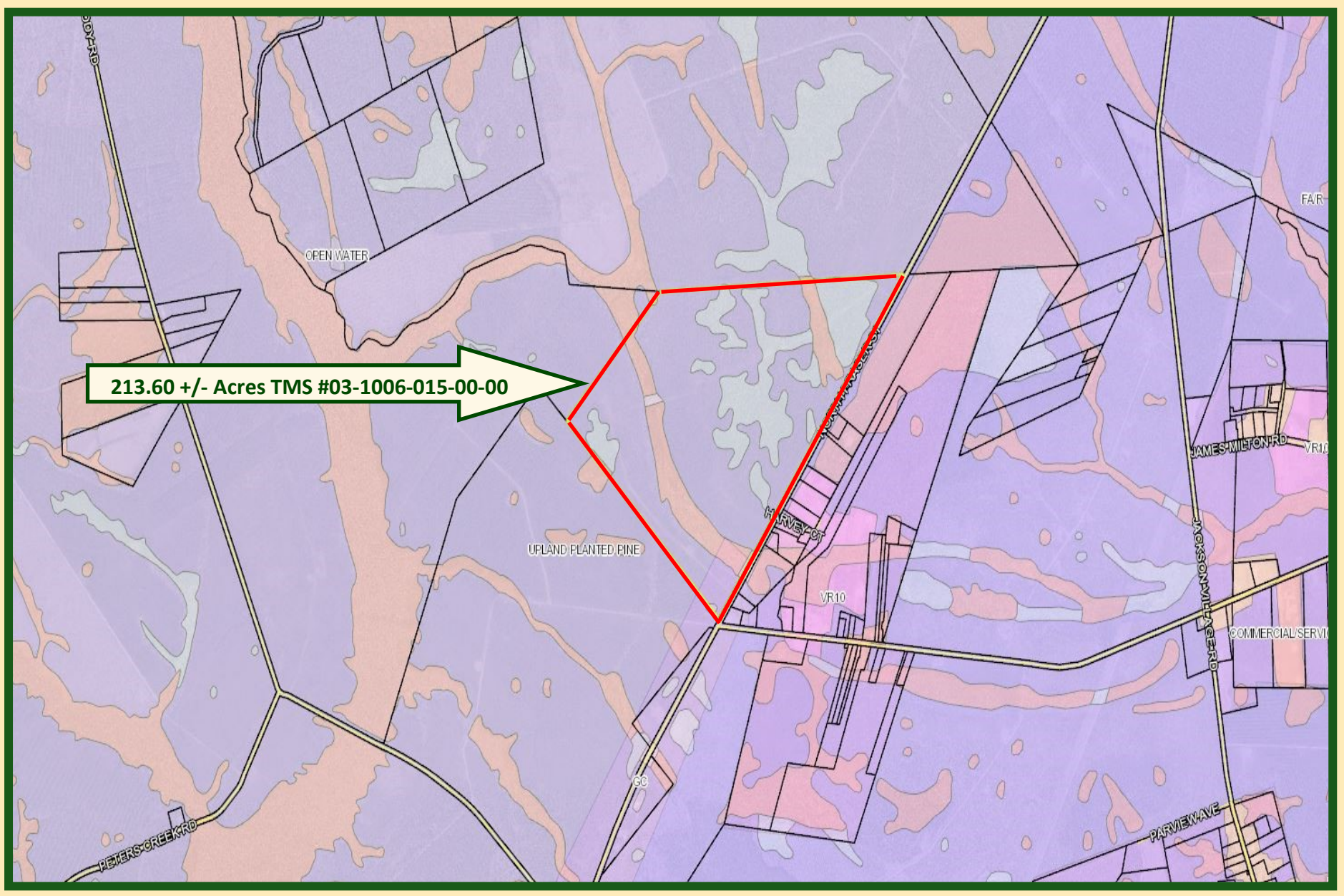
Planters Group Tract



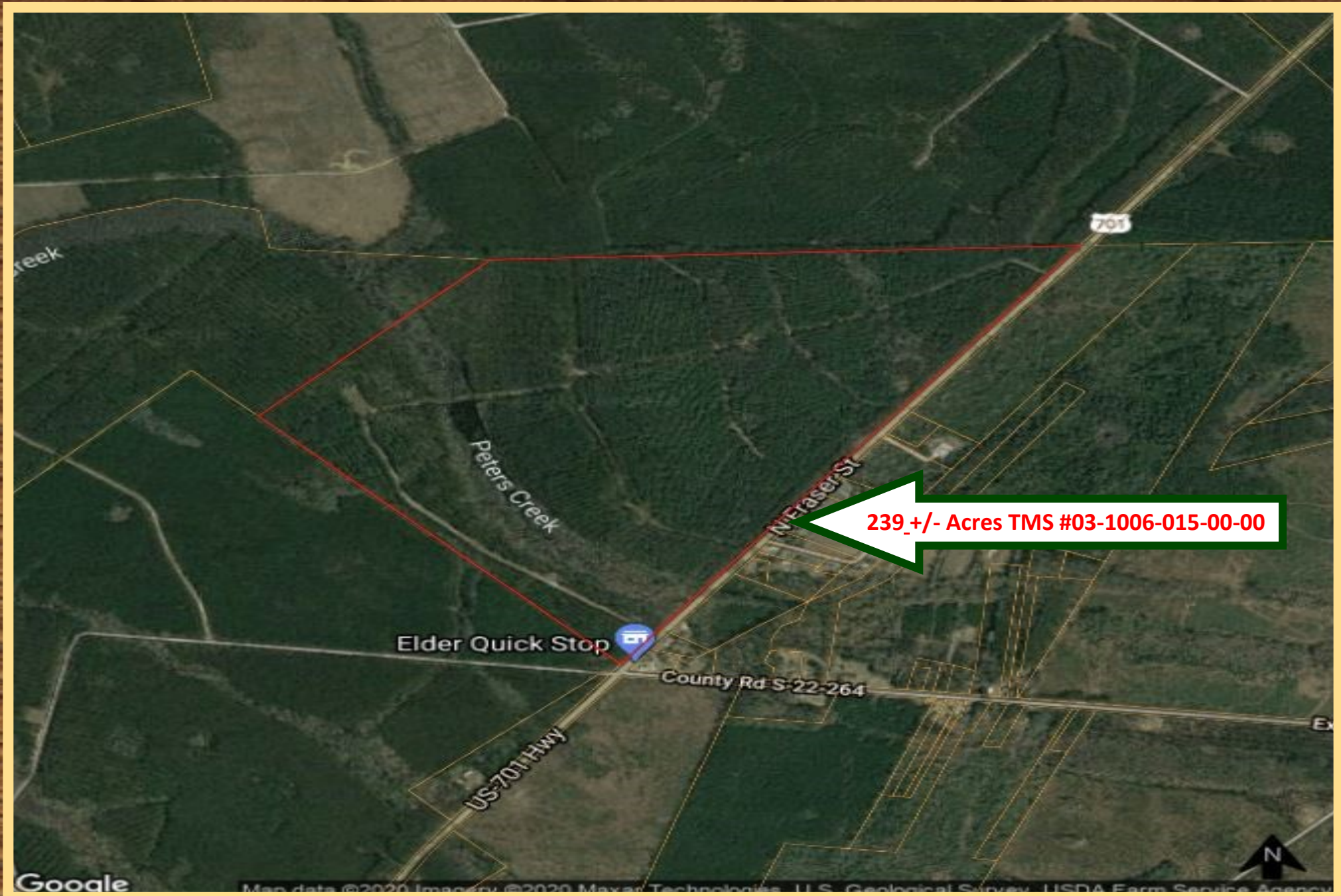
PLANTERS GROUP



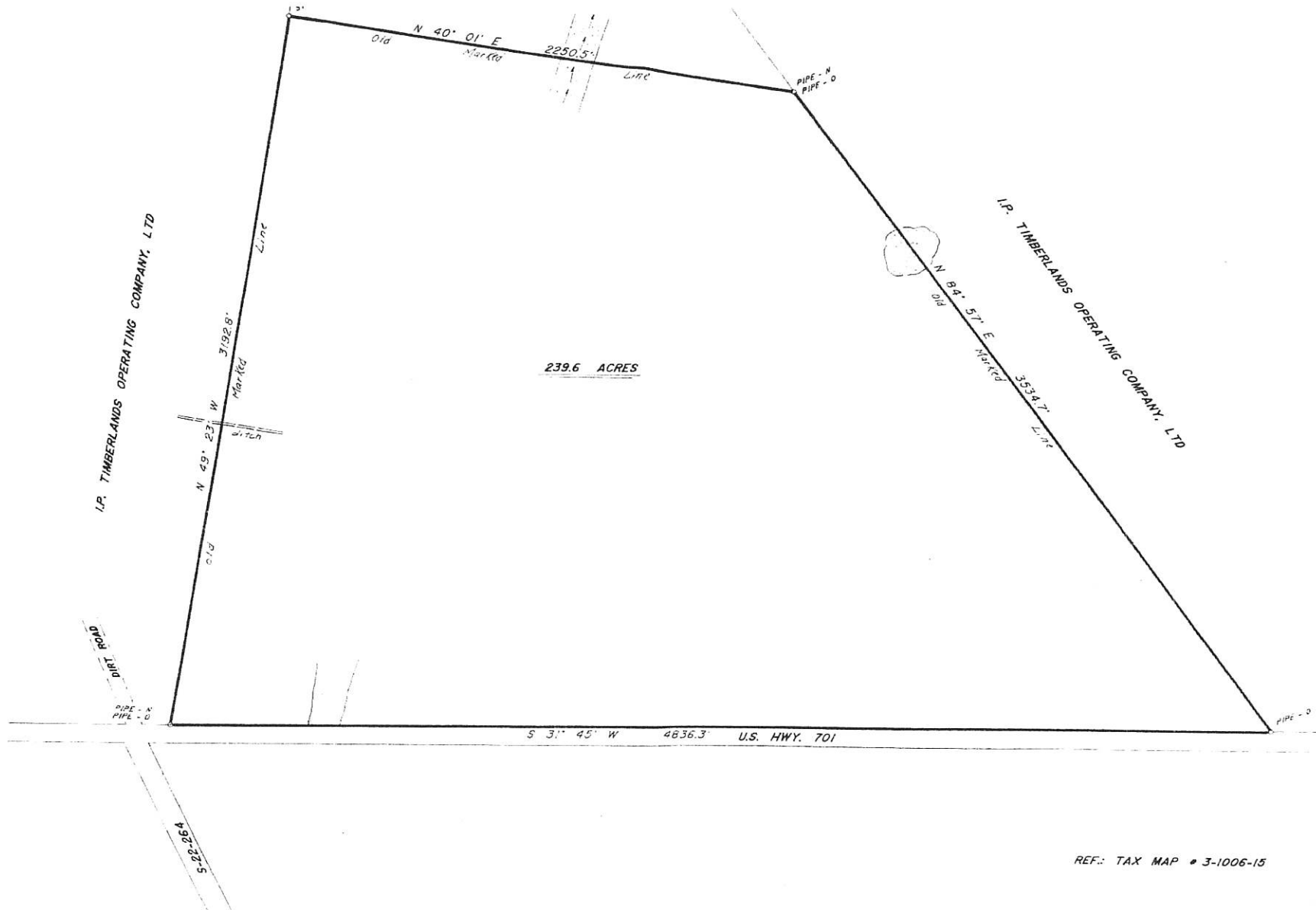
Planters Group



Planters Group



239 +/- Acres TMS #03-1006-015-00-00



REF: TAX MAP # 3-1006-15

Certified to be a resurvey of a piece, parcel or lot of land shown on a map or plat previously recorded in Georgetown County in Plat No. 5 page 127 TRACT D AS SHOWN THEREON

PLAT
OF 239.6 ACRES IN THE PLANTERSVILLE SECTION
THE PROPERTY OF

I hereby certify that the table of precision of the file survey as shown on map 5-22-26A at the area of 239.6 ACRES is furnished by COORDINATE MET method of calculation.