



Commercial Real Estate

Planters Group Tract

Acreage:

**239.4 +/-
Acres**

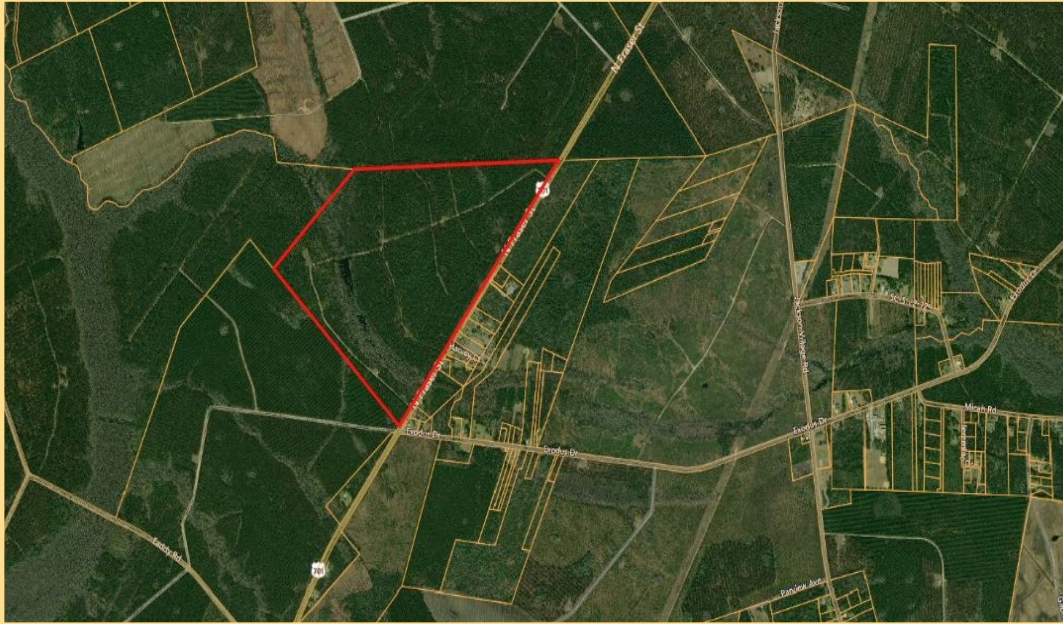
Zoning:

Forest

Agriculture

Location:

**Plantersville,
SC**



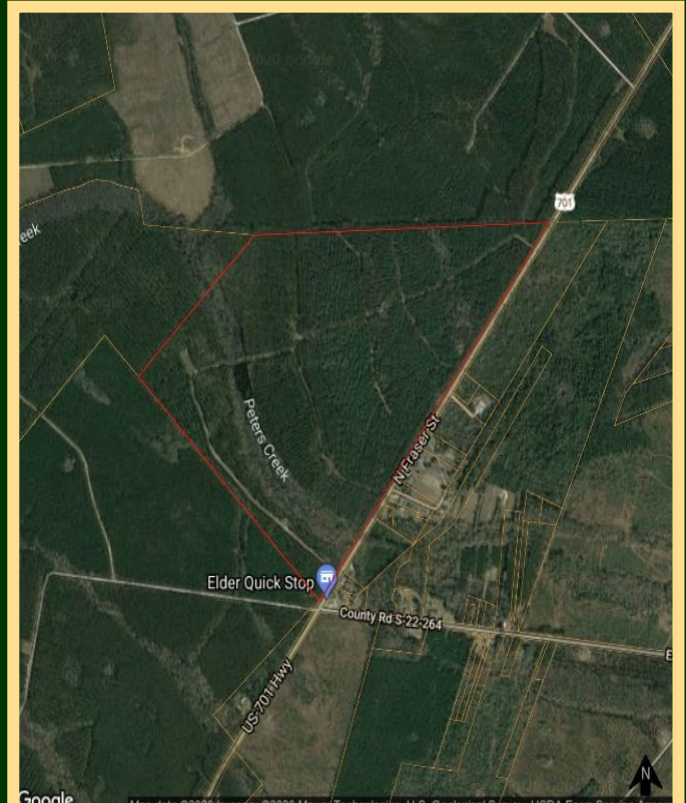
- Located on Highway 701
- 4836 feet of Highway 701 frontage
- 20+/- acre lake
- Duck impoundment sites
- Road system
- Merchantable pine timber
- Georgetown County TMS# 03-1006-015-00-00
- Water and Sewer Available

Price: \$2,000,000.00

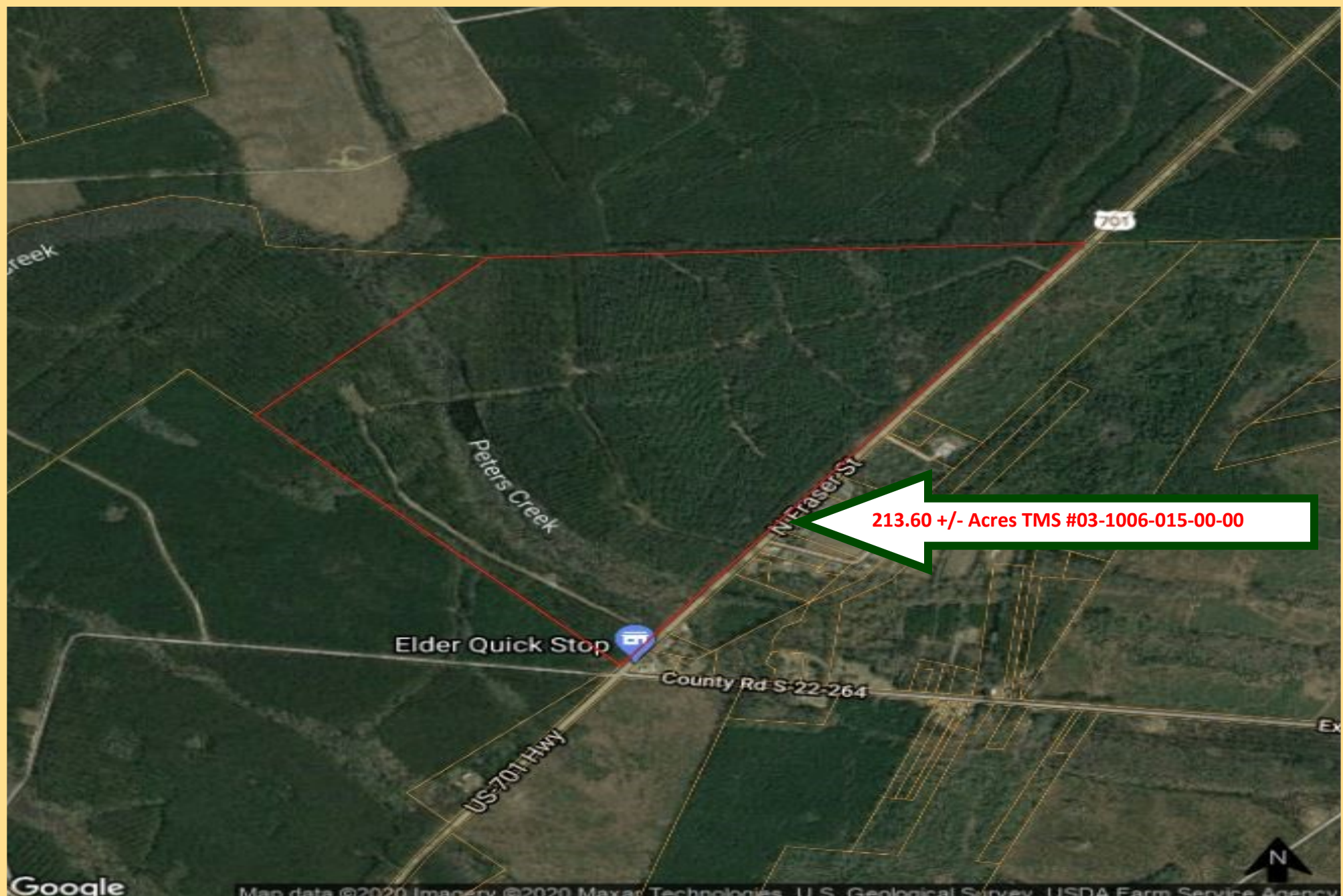
Contact US At:

Phone: 843-449-0441

E-mail: info@wacclt.com

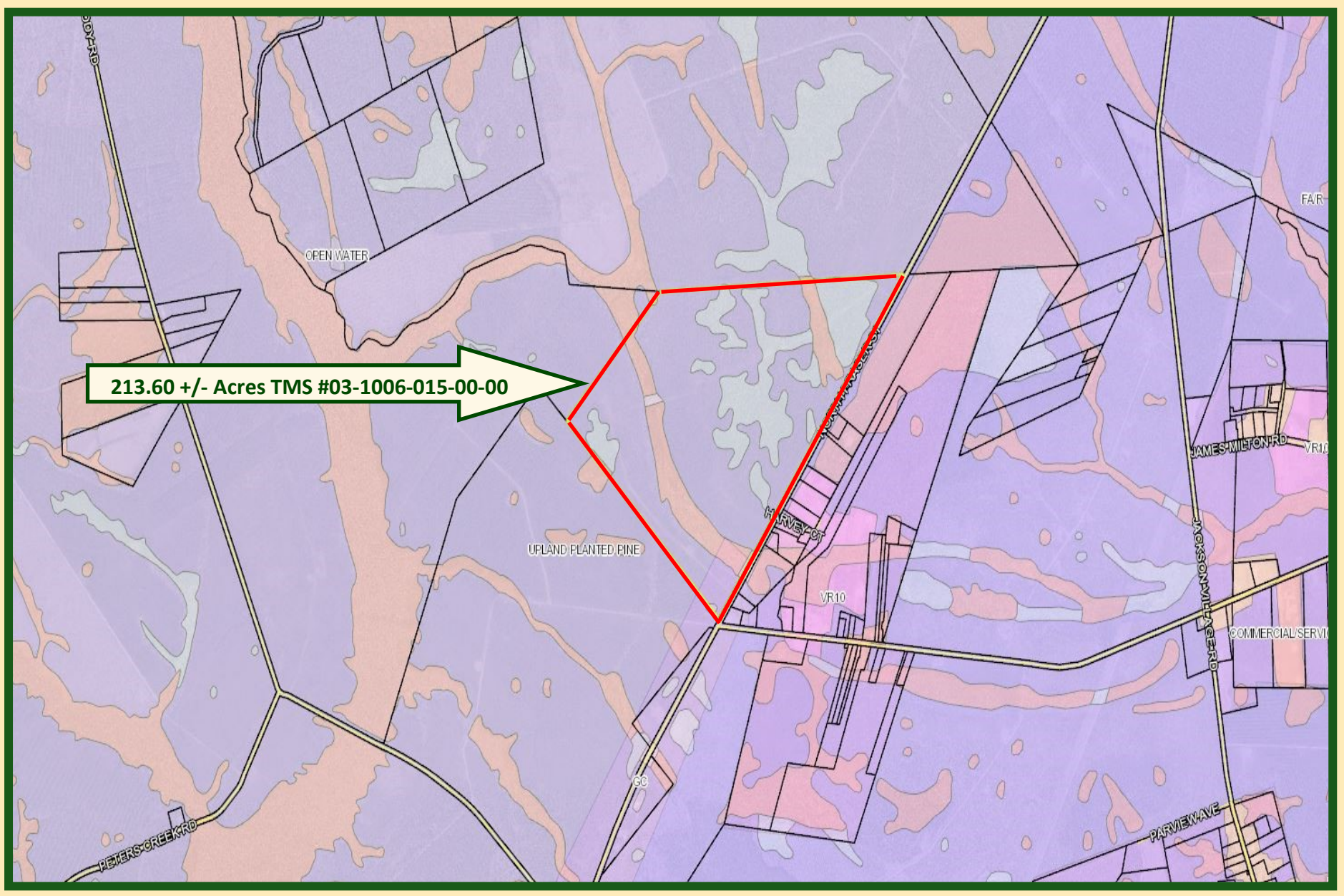


Planters Group



213.60 +/- Acres TMS #03-1006-015-00-00

Planters Group



PLANTERS GROUP



ATLANTIC OCEAN

PLANTERS GROUP



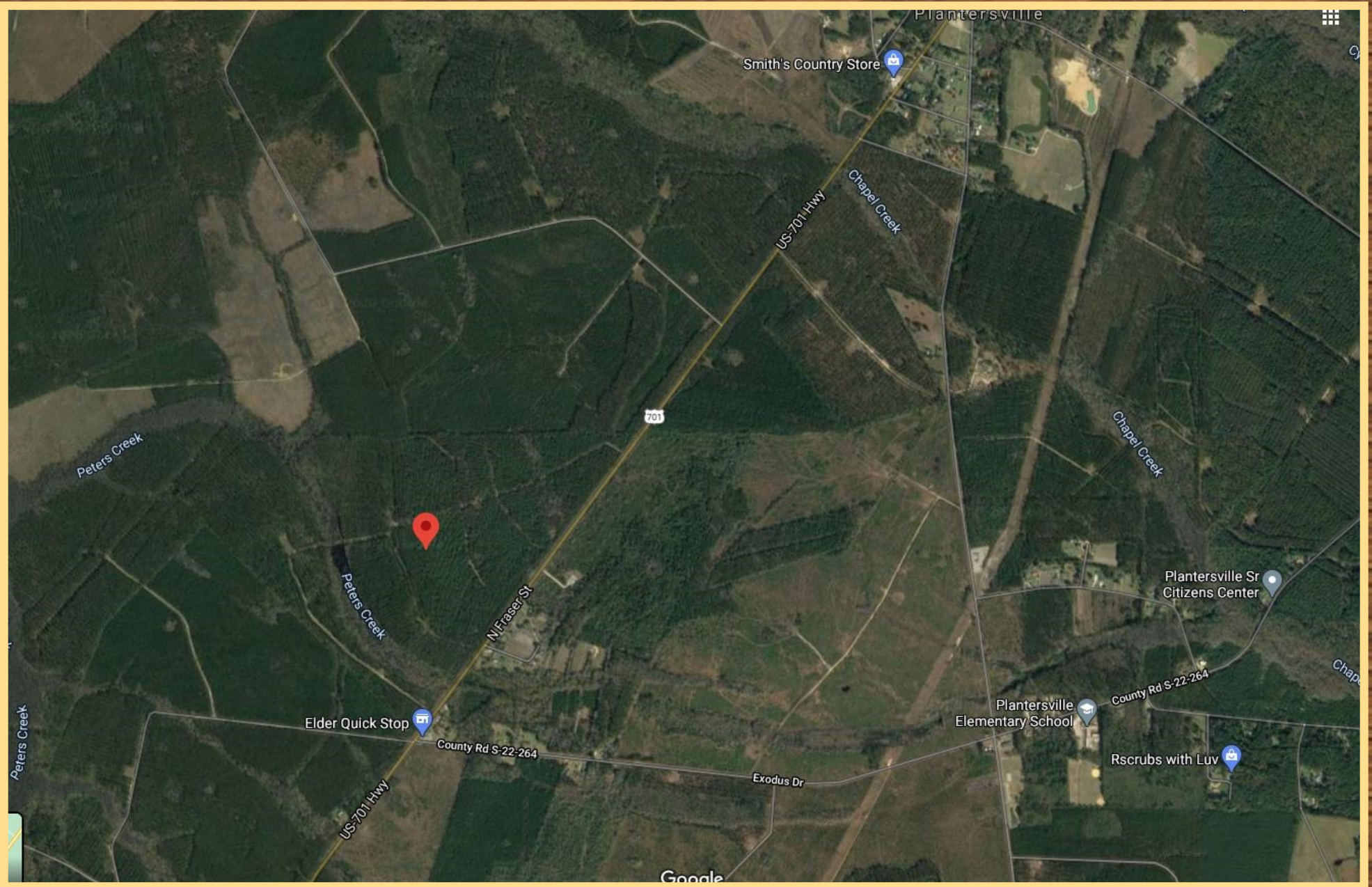
Planters Group LLC



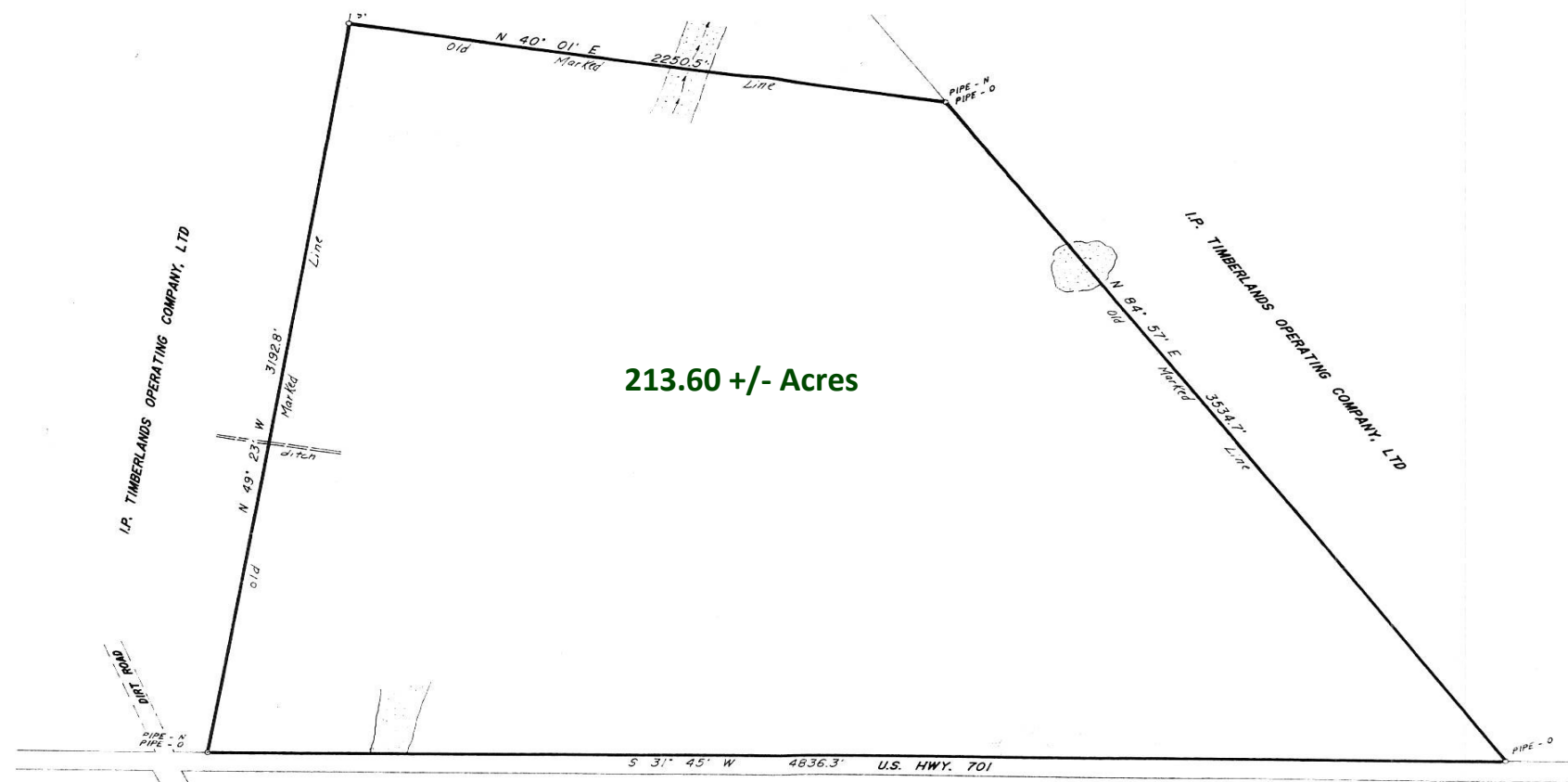
Disclaimer- Site Tech provides this GIS data as a service. NO WARRANTY for the availability or accuracy is provided.

Printed: Aug 19, 2013

Planters Group



Planters Group



213.60 +/- Acres

REF.: TAX MAP # 3-1006-15

Certified to be a resurvey of a piece, parcel or lot of land shown on a map or plat previously recorded in Georgetown County in Plat

Book 5 page 127 TRACT D AS SHOWN THEREON

PLAT
OF 239.6 ACRES IN THE PLANTERSVILLE SECTION
THE PROPERTY OF

"I hereby certify that the ratio of precision of the field survey as shown hereon is 1:4846" as the area of 239.6 AC. was determined by COORDINATE METHOD method of calculation